



SPOKANE COUNTY
SHERIFF

Sheriff Ozzie D. Knezovich

Spokane County Sheriff's Office
Monthly Statistical Crime Review

October 2021

Spokane Valley Reports

(includes all incidents that the Sheriff's Office handled
within the City of Spokane Valley)

The data reflected in these reports pertain to only incidents involving
Spokane County Sheriff's Office personnel.

Airway Heights, Cheney, Liberty Lake, Fairchild Air Force Base, and the City
of Spokane all have their own law enforcement agency. Their data is not
reflected in these reports.



Prepared by Regional Intelligence Group 9 on: 11/08/2021



SPOKANE COUNTY SHERIFF'S OFFICE

Regional Intelligence Group 9

MONTHLY CRIME STATISTICS COMPARISON - Spokane Valley



Preliminary IBR Counts

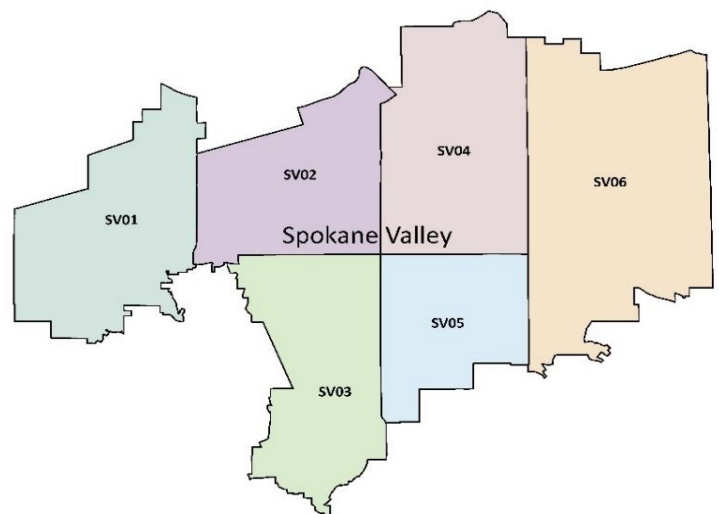
NIBRS Categories	October				Year to Date			
	2021	2020	Change	Average	2021	2020	Change	Average
Crimes Against People								
Criminal Homicide	2	0	200%	0	8	2	300%	1
Neg Manslaughter	0	0	0%	1	0	1	-100%	1
Rape	0	1	-100%	3	30	21	43%	43
Aggravated Assault	20	19	5%	15	145	193	-25%	150
Simple Assault	55	61	-10%	65	495	705	-30%	712
Crimes Against Property								
Robbery	7	6	17%	6	61	70	-13%	55
Burglary - Residential	11	26	-58%	21	168	222	-24%	207
Burglary - Garage	10	11	-9%	13	133	165	-19%	129
Burglary - Commercial	12	31	-61%	16	141	226	-38%	151
Theft	114	111	3%	138	1119	1185	-6%	1353
Theft - Shoplifting	72	93	-23%	91	656	785	-16%	798
Vehicle Theft	39	31	26%	32	290	296	-2%	315
Malicious Mischief	176	174	1%	156	1371	1469	-7%	1426
Vehicle Prowl	100	116	-14%	97	861	933	-8%	894

* averages are calculated on data since 01/01/2017 as more data is available average accuracy will improve.

This chart represents preliminary counts of the original incident reports. Full statistical analysis to determine the confidence level of this data has not been performed. In general, the preliminary incident counts are less than the crimes eventually reported on the yearly crime report.

Notes on Category Groupings:

- Criminal Homicide = IBR Classification 09A
- Neg Manslaughter = IBR Classification 09B
- Rape = IBR Classification 11A, 11B, & 11C
- Aggravated Assault = IBR Classification 13A
- Simple Assault = IBR Classification 13B
- Robbery = IBR Classification 120
- Burglary = IBR Classification 220 (residential, garage, and commercial breakdown is done by statute description)
- Theft = IBR Classifications 23A, 23B, 23D, 23E, 23G, 23H
- Theft - Shoplifting = IBR Classification 23C (intentionally removed from the theft grouping)
- Vehicle Theft = IBR Classification 240
- Malicious Mischief = IBR Classification 290, Destruction/Damage/Vandalism
- Vehicle Prowl = IBR Classification 23F, Theft from Motor



SPOKANE COUNTY SHERIFF'S OFFICE

Regional Intelligence Group 9

IBR Count by District



Time Period: October 2021

IBR Offense	Spokane Valley Districts						Unincorporated Districts																TOTAL		
	1	2	3	4	5	6	7	8	9	10	11	12	13	14	15	DP	FF	LAH	ML	MW	RF	SPA		WAV	OTHER
09A Murder/NonNegligent																									
Manslaughter	1	1	0	0	0	0	0	0	0	0	0	0	0	0	0	0	0	0	0	0	0	0	0	0	2
09B Negligent Manslaughter	0	0	0	0	0	0	0	0	0	0	0	0	0	0	0	0	0	0	0	0	0	0	0	0	0
100 Kidnapping/Abduction	0	0	0	1	0	0	0	1	0	0	0	0	0	0	0	0	0	0	0	0	0	0	0	0	2
11A Rape - Forcible	0	0	0	0	0	0	1	0	0	0	1	0	0	0	0	0	0	0	0	0	0	0	0	0	2
11B Sodomy - Forcible	0	0	0	0	0	0	0	0	0	0	0	0	0	0	0	0	0	0	0	0	0	0	0	0	0
11C Sex Assault With Object	0	0	0	0	0	0	0	0	0	0	0	0	0	0	0	0	0	0	0	0	0	0	0	0	0
11D Fondling - Forcible	0	0	0	1	0	0	1	0	0	0	0	0	0	0	0	0	0	0	0	0	0	0	0	0	2
120 Robbery	0	2	0	2	0	3	0	0	0	0	0	0	0	0	0	0	0	0	0	0	0	0	0	0	7
13A Aggravated Assault	3	8	4	3	2	0	0	0	1	0	0	1	1	1	0	1	0	0	0	0	0	0	0	6	31
13B Simple Assault	8	13	11	8	6	9	4	4	3	2	1	5	4	2	0	0	0	0	6	0	0	0	0	12	98
13C Intimidation	2	5	3	4	2	6	1	2	0	2	0	0	3	3	0	0	0	0	1	0	0	0	0	5	39
36A Incest	0	0	0	0	0	0	0	0	0	0	0	0	0	0	0	0	0	0	0	0	0	0	0	0	0
36B Rape - Statutory	0	0	0	0	0	0	0	0	0	0	0	0	0	0	0	0	0	0	0	0	0	0	0	0	0
64A Human Trafficking - Commercial Sex Acts	0	0	0	0	0	0	0	0	0	0	0	0	0	0	0	0	0	0	0	0	0	0	0	0	0
64B Human Trafficking - Involuntary Servitude	0	0	0	0	0	0	0	0	0	0	0	0	0	0	0	0	0	0	0	0	0	0	0	0	0
500 Violation of Protection Orders	4	8	2	5	2	4	3	0	4	0	0	2	2	4	0	1	0	0	1	0	0	0	0	2	44
Total Crimes Against Persons	18	37	20	24	12	22	10	7	8	4	2	8	10	10	0	2	0	0	8	0	0	0	0	25	227
200 Arson	0	0	0	0	0	0	1	1	0	0	2	1	0	0	0	0	0	0	0	0	0	0	0	0	5
210 Extortion/Blackmail	0	0	0	0	0	0	0	0	0	0	0	0	0	1	0	0	0	0	0	0	0	0	0	0	1
220 Burglary/Breaking & Entering	12	9	2	7	0	3	2	4	2	3	4	1	13	4	0	0	0	0	0	2	0	0	0	10	78
23A Theft - Pocket-Picking	0	0	0	0	0	0	0	0	0	0	0	0	0	0	0	0	0	0	0	0	0	0	0	0	0
23B Theft - Purse Snatching	0	0	0	0	0	0	0	0	0	0	0	0	0	0	0	0	0	0	0	0	0	0	0	0	0
23C Theft - Shoplifting	31	4	13	14	0	10	1	0	0	0	0	0	0	0	0	1	0	0	0	0	0	0	0	2	76
23D Theft From Building	6	2	5	4	3	2	1	1	1	0	0	1	8	1	0	2	0	0	0	0	0	0	0	4	41
23E Theft From Coin Operated Machine	0	0	1	0	0	0	0	0	0	0	0	0	0	0	0	0	0	0	0	0	0	0	0	0	1
23F Theft From Motor Vehicle	13	20	16	34	7	10	7	7	1	13	1	5	19	3	0	0	1	0	3	2	0	0	0	29	191
23G Theft of Motor Vehicle Parts/Accessories	6	8	4	12	3	2	3	0	1	1	1	1	1	1	0	0	0	0	0	0	0	0	0	9	53
23H Theft - All Other	10	16	5	9	2	14	8	3	6	9	11	5	13	4	0	2	0	0	0	0	0	0	0	10	127
240 Motor Vehicle Theft	8	9	6	9	1	6	3	0	1	2	2	3	8	3	0	0	0	0	0	2	0	0	0	8	71
250 Counterfeiting/Forgery	0	1	3	2	2	1	2	0	1	0	0	1	0	1	0	0	0	0	0	0	0	0	0	0	14
26A Fraud - False Pretense/Swindling	0	5	6	8	8	5	3	0	2	2	1	0	3	1	0	1	1	0	0	0	0	0	0	3	49
26B Fraud - Credit Card/ATM	2	1	5	5	3	4	4	3	2	1	2	0	2	1	0	0	0	0	0	0	0	0	0	2	37
26C Fraud - Impersonation	1	1	1	0	0	0	0	0	0	1	1	2	1	0	0	0	0	0	1	1	0	0	0	0	10
26D Welfare Fraud	0	0	0	0	0	0	0	0	0	0	0	0	0	0	0	0	0	0	0	0	0	0	0	0	0
26F Identity Theft	1	6	1	0	3	2	0	1	2	0	2	3	2	3	0	1	1	0	1	0	0	0	0	1	30
26G Hacking/Computer Invasion	0	2	0	1	0	0	1	1	0	0	0	0	1	1	0	0	0	0	1	1	0	0	0	1	10

SPOKANE COUNTY SHERIFF'S OFFICE

Regional Intelligence Group 9

IBR Count by District



Time Period: October 2021

IBR Offense	Spokane Valley Districts						Unincorporated Districts																TOTAL		
	1	2	3	4	5	6	7	8	9	10	11	12	13	14	15	DP	FF	LAH	ML	MW	RF	SPA		WAV	OTHER
270 Embezzlement	1	0	0	0	0	0	0	0	0	0	0	0	0	0	0	0	0	0	0	0	0	0	0	0	1
280 Stolen Property Offense (Receiving, etc.)	1	1	0	1	2	0	1	0	0	0	0	0	0	1	0	2	0	0	0	1	0	0	0	3	13
290 Destruction/Vandalism	31	44	27	42	15	17	14	8	4	12	7	13	24	5	0	17	0	0	2	3	0	1	0	36	322
Total Crimes Against Property	123	129	95	148	49	76	51	29	23	44	34	36	95	30	0	26	3	0	8	12	0	1	0	118	1130
35A Drugs/Narcotics Violation	0	0	0	0	1	0	0	0	0	0	0	0	1	0	0	0	0	0	0	0	0	0	0	1	3
35B Drug Equipment Violation	0	0	0	0	0	0	0	0	0	0	0	0	0	0	0	0	0	0	0	0	0	0	0	1	1
370 Pornography/Obscene Material	0	0	0	0	0	1	0	0	0	0	0	0	0	0	0	0	0	0	0	0	0	0	0	0	1
39A Betting/Wagering	0	0	0	0	0	0	0	0	0	0	0	0	0	0	0	0	0	0	0	0	0	0	0	0	0
39B Gambling - Operating Promoting Assisting	0	0	0	0	0	0	0	0	0	0	0	0	0	0	0	0	0	0	0	0	0	0	0	0	0
39C Gambling Equipment Violation	0	0	0	0	0	0	0	0	0	0	0	0	0	0	0	0	0	0	0	0	0	0	0	0	0
40A Prostitution	0	0	0	0	0	0	0	0	0	0	0	0	0	0	0	0	0	0	0	0	0	0	0	0	0
40B Prostitution - Assisting/Promoting	0	0	0	0	0	0	0	0	0	0	0	0	0	0	0	0	0	0	0	0	0	0	0	0	0
40C Purchasing Prostitution	0	0	0	0	0	0	0	0	0	0	0	0	0	0	0	0	0	0	0	0	0	0	0	0	0
510 Bribery	0	0	0	0	0	0	0	0	0	0	0	0	0	0	0	0	0	0	0	0	0	0	0	0	0
520 Weapon Law Violation	1	1	1	2	1	0	0	0	1	0	0	0	0	0	0	0	0	0	0	0	0	0	0	1	8
720 Animal Cruelty	0	0	0	0	0	0	0	0	0	0	0	0	0	0	0	0	0	0	0	0	0	0	0	0	0
Total Crimes Against Society	1	1	1	2	2	1	0	0	1	0	0	0	1	0	0	0	0	0	0	0	0	0	0	3	13
09C Justifiable Homicide	1	0	0	0	1	0	0	0	0	0	0	0	0	0	0	0	0	0	0	0	0	0	0	1	3
90A Bad Checks	0	1	0	1	0	0	0	0	0	0	0	0	0	0	0	0	0	0	0	0	0	0	0	0	2
90B Curfew/Loitering	0	0	0	0	0	0	0	0	0	0	0	0	0	0	0	0	0	0	0	0	0	0	0	0	0
90C Disorderly Conduct	1	0	0	0	1	0	0	0	0	0	0	0	0	0	0	0	0	0	0	0	0	0	0	1	3
90D Driving Under Influence	3	8	2	8	3	1	0	0	0	0	1	3	1	2	0	0	0	0	0	1	0	0	0	3	36
90F Family Offense - NonViolent	0	0	0	0	0	0	0	0	0	0	0	0	0	0	0	0	0	0	0	0	0	0	0	0	0
90G Liquor Law Violation	0	1	1	0	1	0	0	0	0	0	0	0	0	0	0	0	0	0	0	0	0	0	1	4	4
90H Peeping Tom	0	0	0	0	0	0	0	0	0	0	0	0	0	0	0	0	0	0	0	0	0	0	0	0	0
90J Trespass of Real Property	3	2	0	7	0	0	3	1	1	0	1	0	1	1	0	0	0	0	0	2	0	0	0	7	29
90Z All Other Offenses	5	7	5	9	7	2	10	1	0	4	0	2	3	3	0	1	0	0	0	2	0	1	0	19	81
Total Group B Offenses	13	19	8	25	13	3	13	2	1	4	2	5	5	6	0	1	0	0	0	5	0	1	0	32	158
NR Not Reportable	8	8	5	5	3	3	1	0	0	0	2	8	10	1	0	2	0	0	0	1	0	0	0	15	72
Total All Offenses	163	194	129	204	79	105	75	38	33	52	40	57	121	47	0	31	3	0	16	18	0	2	0	193	1600

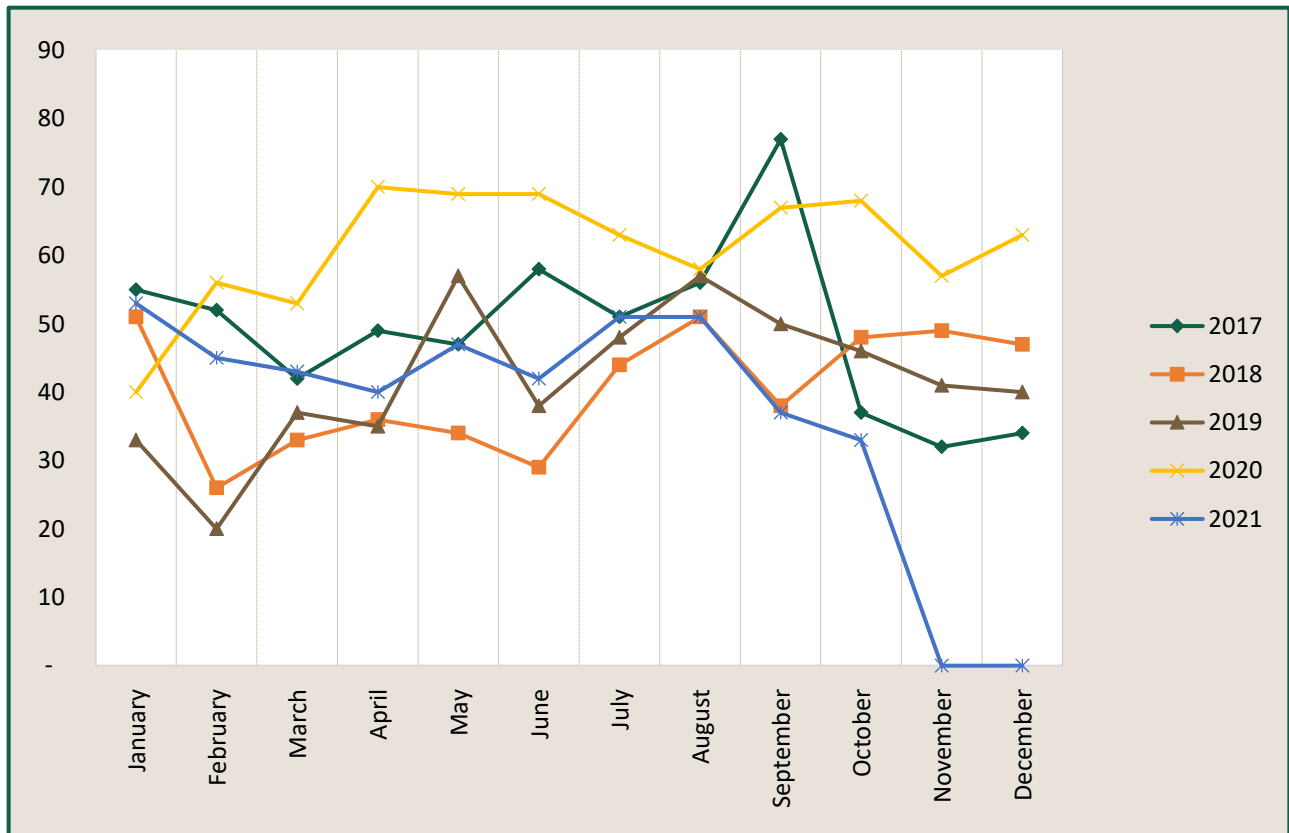
SPOKANE COUNTY SHERIFF'S OFFICE

Regional Intelligence Group 9

Burglary - Spokane Valley



Time Period: October 2021



	2017	2018	2019	2020	2021
January	55	51	33	40	53
February	52	26	20	56	45
March	42	33	37	53	43
April	49	36	35	70	40
May	47	34	57	69	47
June	58	29	38	69	42
July	51	44	48	63	51
August	56	51	57	58	51
September	77	38	50	67	37
October	37	48	46	68	33
November	32	49	41	57	-
December	34	47	40	63	-
Grand Total	590	486	502	733	442

* IBR Offense: Burglary/Breaking & Entering 220

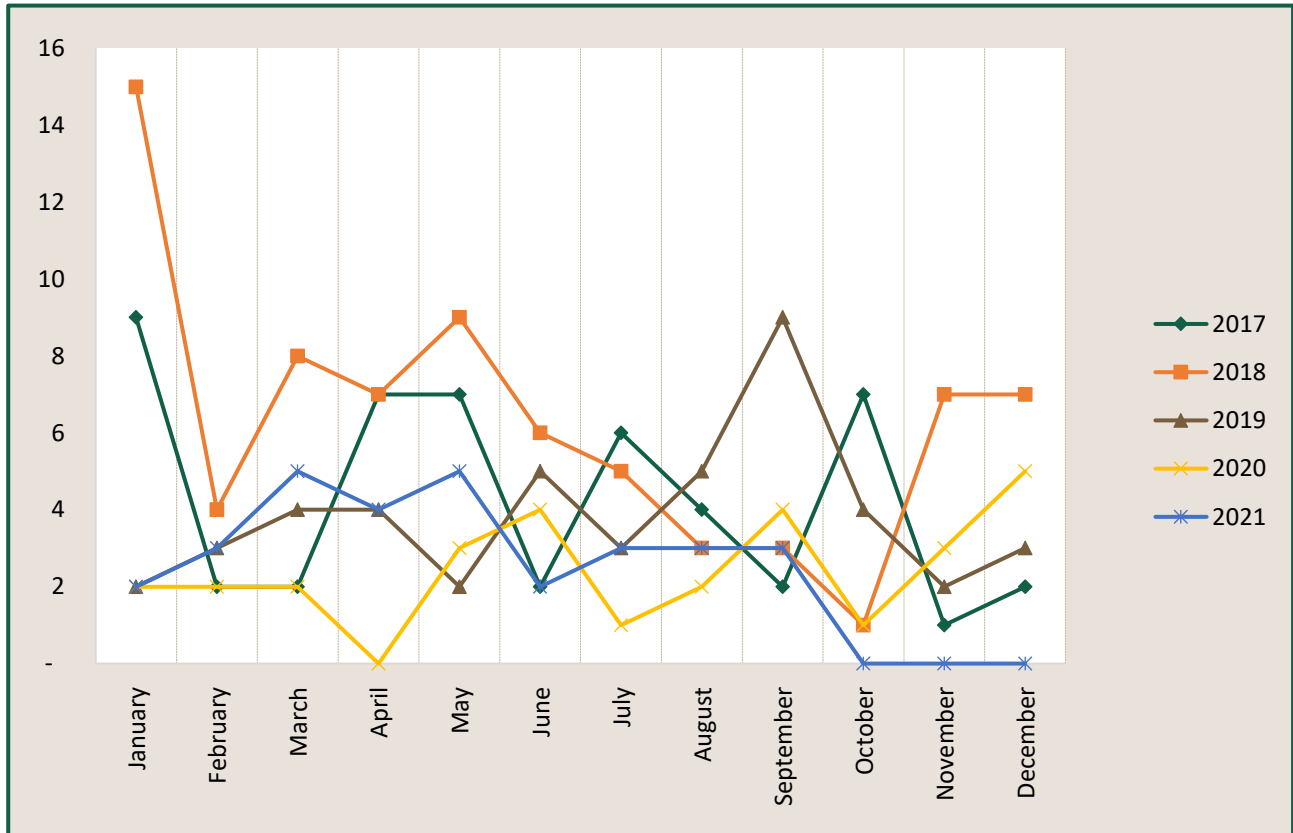
SPOKANE COUNTY SHERIFF'S OFFICE

Regional Intelligence Group 9

Rape - Spokane Valley



Time Period: October 2021



	2017	2018	2019	2020	2021
January	9	15	2	2	2
February	2	4	3	2	3
March	2	8	4	2	5
April	7	7	4	-	4
May	7	9	2	3	5
June	2	6	5	4	2
July	6	5	3	1	3
August	4	3	5	2	3
September	2	3	9	4	3
October	7	1	4	1	-
November	1	7	2	3	-
December	2	7	3	5	-
Grand Total	51	75	46	29	30

*IBR Offense: Rape - Forcible 11A, Sodomy - Forcible 11B, Sexual Assault with Object 11C

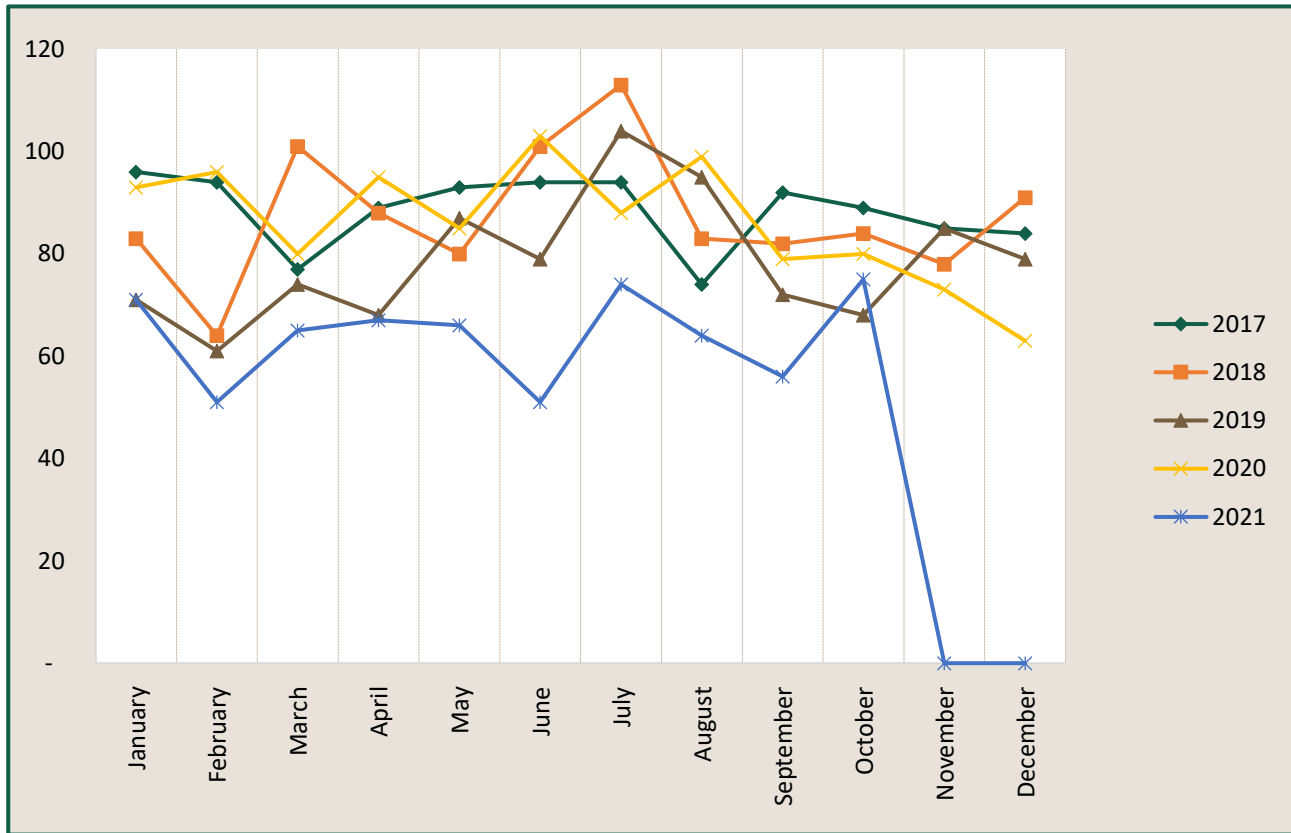
SPOKANE COUNTY SHERIFF'S OFFICE

Regional Intelligence Group 9

Assault - Spokane Valley



Time Period: October 2021



	2017	2018	2019	2020	2021
January	96	83	71	93	71
February	94	64	61	96	51
March	77	101	74	80	65
April	89	88	68	95	67
May	93	80	87	85	66
June	94	101	79	103	51
July	94	113	104	88	74
August	74	83	95	99	64
September	92	82	72	79	56
October	89	84	68	80	75
November	85	78	85	73	-
December	84	91	79	63	-
Grand Total	1,061	1,048	943	1,034	640

* IBR Offense: Aggravated Assault 13A & Simple Assault 13B

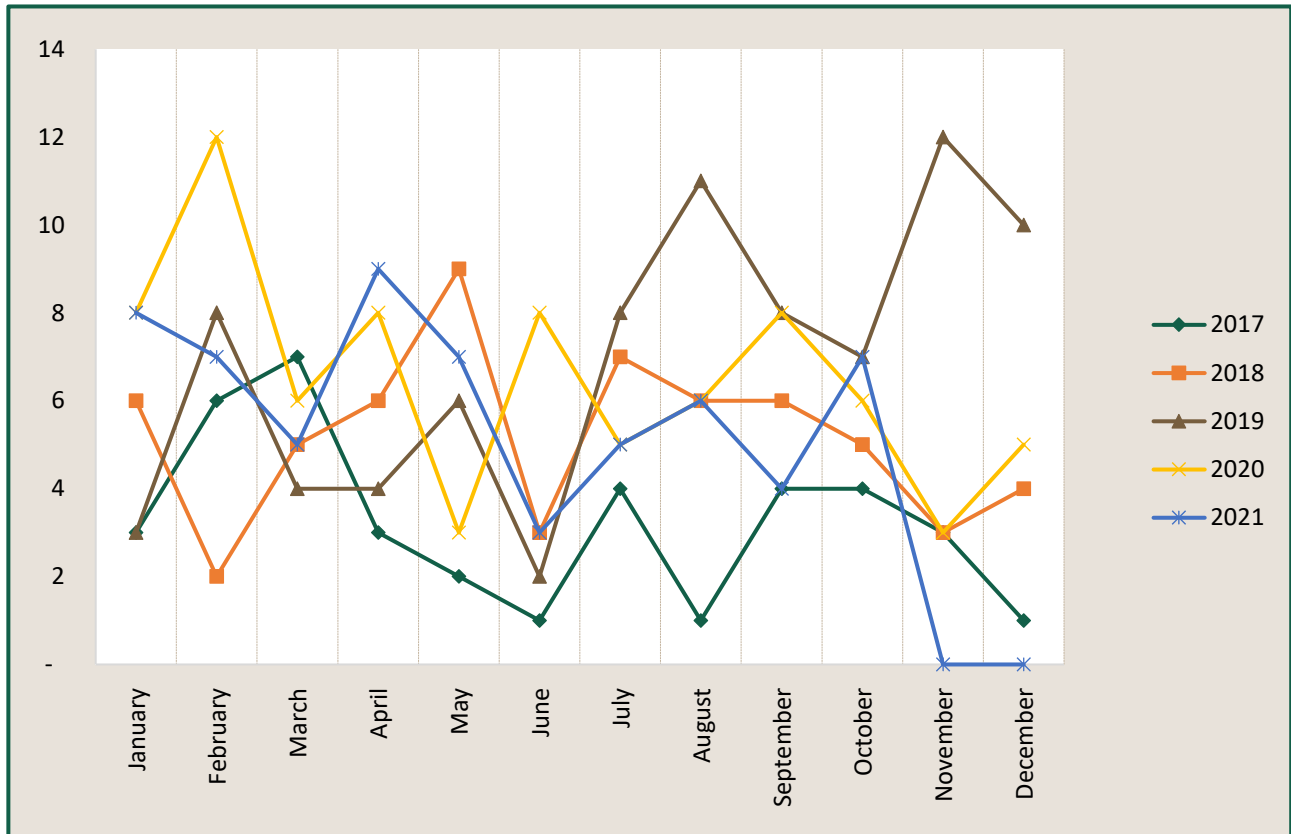
SPOKANE COUNTY SHERIFF'S OFFICE

Regional Intelligence Group 9

Robbery - Spokane Valley



Time Period: October 2021



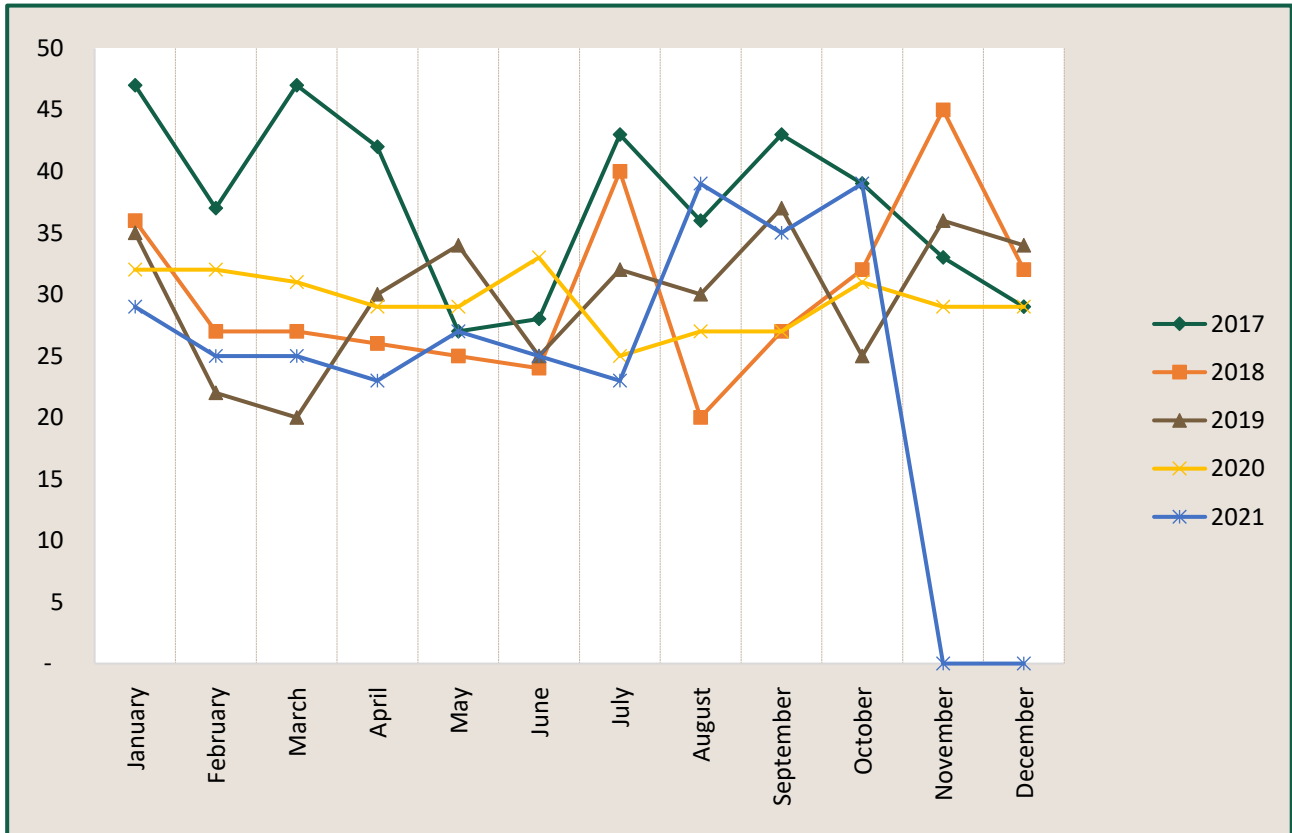
	2017	2018	2019	2020	2021
January	3	6	3	8	8
February	6	2	8	12	7
March	7	5	4	6	5
April	3	6	4	8	9
May	2	9	6	3	7
June	1	3	2	8	3
July	4	7	8	5	5
August	1	6	11	6	6
September	4	6	8	8	4
October	4	5	7	6	7
November	3	3	12	3	-
December	1	4	10	5	-
Grand Total	39	62	83	78	61

* IBR Offense: Robbery 120

SPOKANE COUNTY SHERIFF'S OFFICE
 Regional Intelligence Group 9
 Motor Vehicle Theft - Spokane Valley



Time Period: October 2021



	2017	2018	2019	2020	2021
January	47	36	35	32	29
February	37	27	22	32	25
March	47	27	20	31	25
April	42	26	30	29	23
May	27	25	34	29	27
June	28	24	25	33	25
July	43	40	32	25	23
August	36	20	30	27	39
September	43	27	37	27	35
October	39	32	25	31	39
November	33	45	36	29	-
December	29	32	34	29	-
Grand Total	451	361	360	354	290

* IBR Offense: Motor Vehicle Theft 240

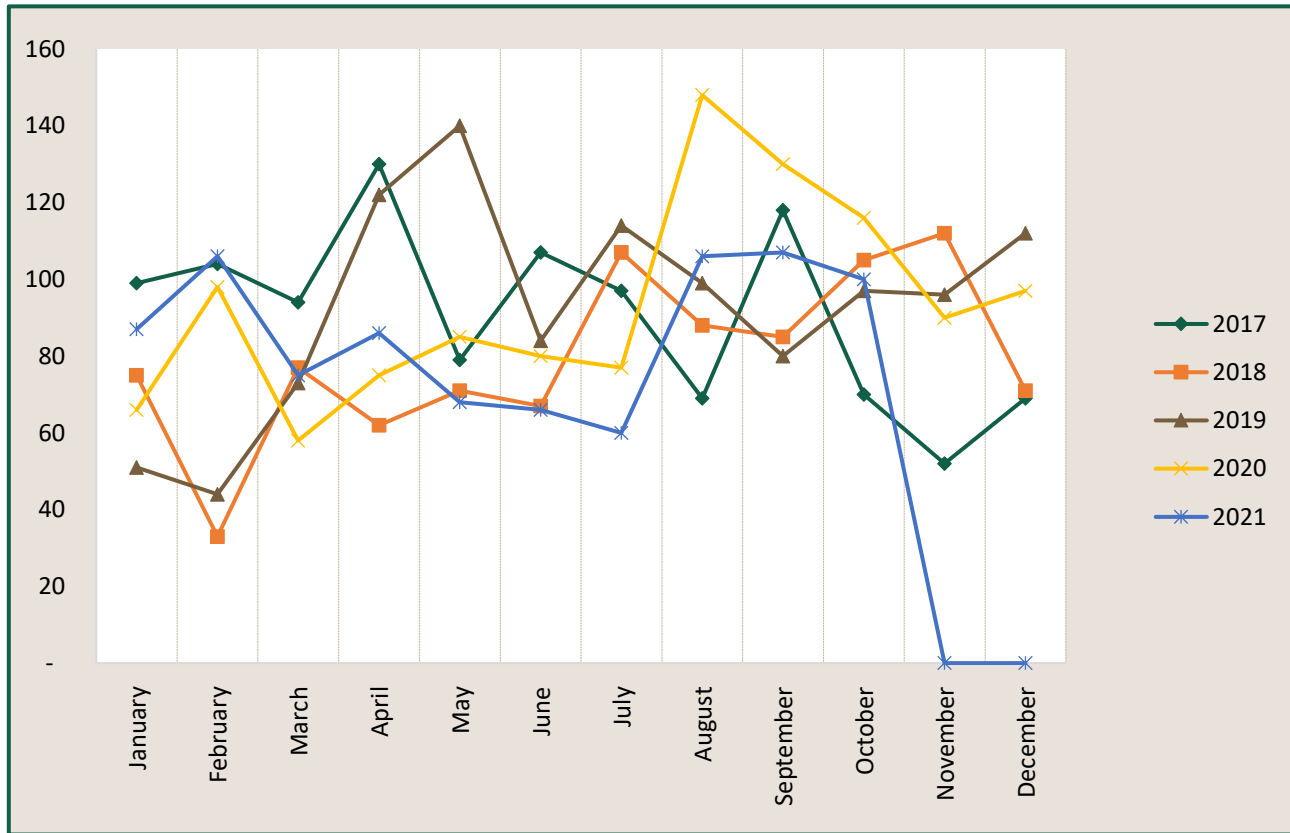
SPOKANE COUNTY SHERIFF'S OFFICE

Regional Intelligence Group 9

Theft From Motor Vehicle (Vehicle Prowl) - Spokane Valley



Time Period: October 2021



	2017	2018	2019	2020	2021
January	99	75	51	66	87
February	104	33	44	98	106
March	94	77	73	58	75
April	130	62	122	75	86
May	79	71	140	85	68
June	107	67	84	80	66
July	97	107	114	77	60
August	69	88	99	148	106
September	118	85	80	130	107
October	70	105	97	116	100
November	52	112	96	90	-
December	69	71	112	97	-
Grand Total	1,088	953	1,112	1,120	861

* IBR Offense: Theft From Motor Vehicle 23F

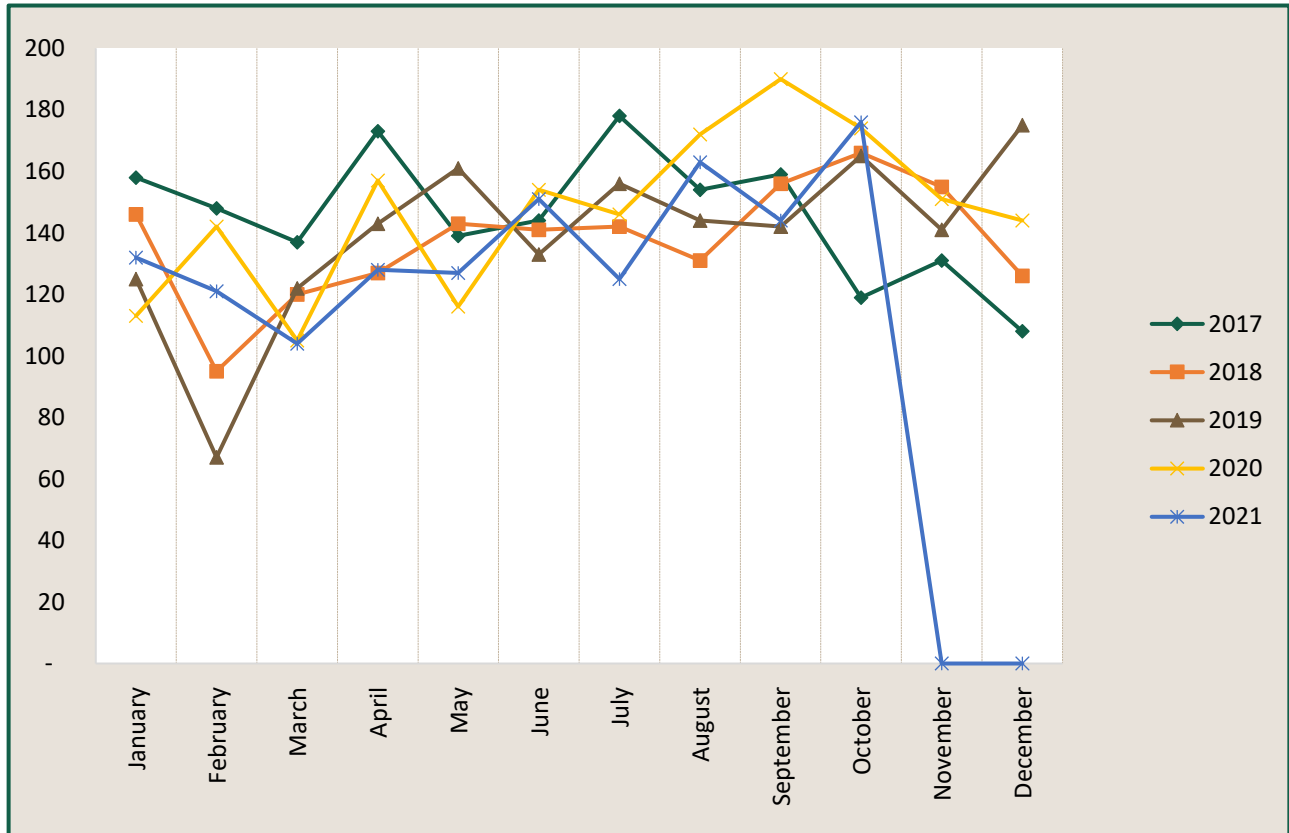
SPOKANE COUNTY SHERIFF'S OFFICE

Regional Intelligence Group 9

Damage/Destruction/Vandalism (MALMS) - Spokane Valley



Time Period: October 2021



	2017	2018	2019	2020	2021
January	158	146	125	113	132
February	148	95	67	142	121
March	137	120	122	105	104
April	173	127	143	157	128
May	139	143	161	116	127
June	144	141	133	154	151
July	178	142	156	146	125
August	154	131	144	172	163
September	159	156	142	190	144
October	119	166	165	174	176
November	131	155	141	151	-
December	108	126	175	144	-
Grand Total	1,748	1,648	1,674	1,764	1,371

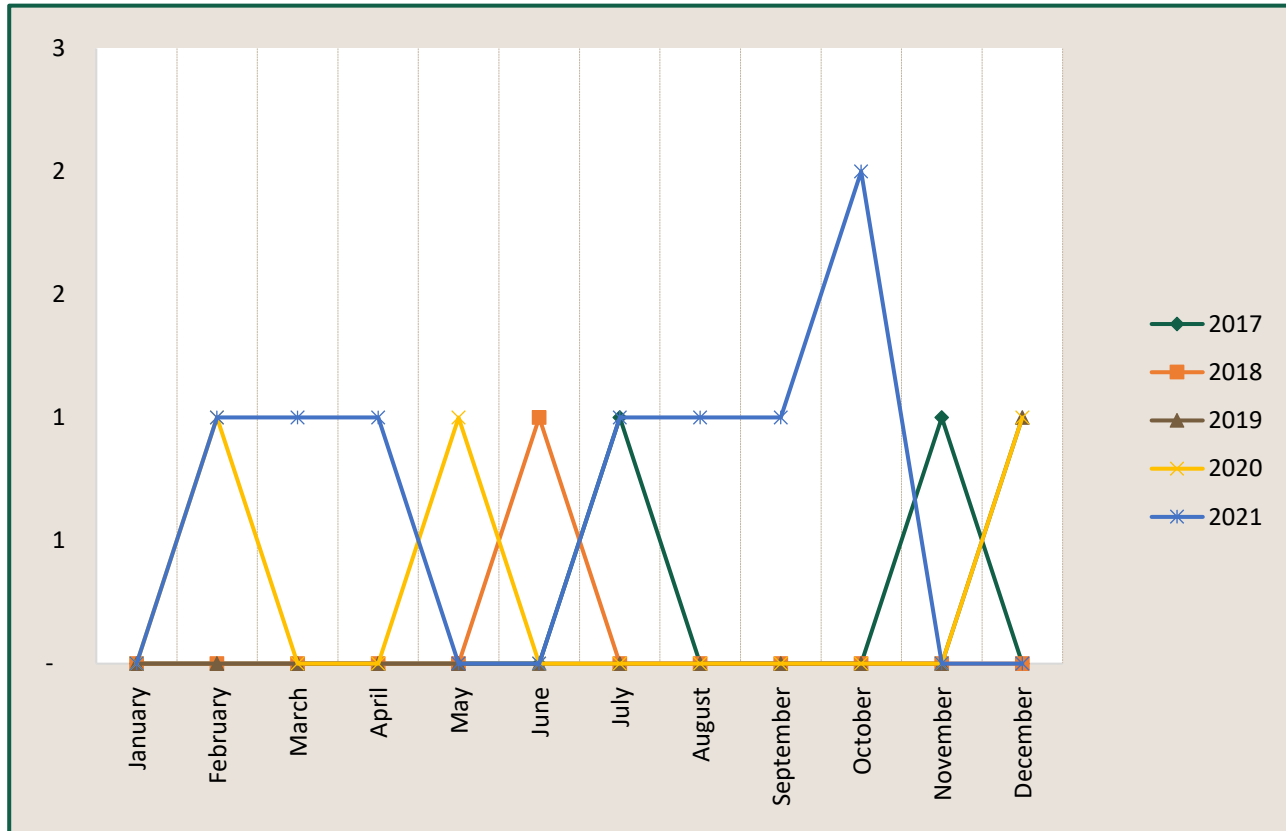
SPOKANE COUNTY SHERIFF'S OFFICE

Regional Intelligence Group 9

Homicide - Spokane Valley



Time Period: October 2021



	2017	2018	2019	2020	2021
January	-	-	-	-	-
February	-	-	-	1	1
March	-	-	-	-	1
April	-	-	-	-	1
May	-	-	-	1	-
June	-	1	-	-	-
July	1	-	-	-	1
August	-	-	-	-	1
September	-	-	-	-	1
October	-	-	-	-	2
November	1	-	-	-	-
December	-	-	1	1	-
Grand Total	2	1	1	3	8

*IBR Offense: Murder/Non-Negligent Manslaughter 09A

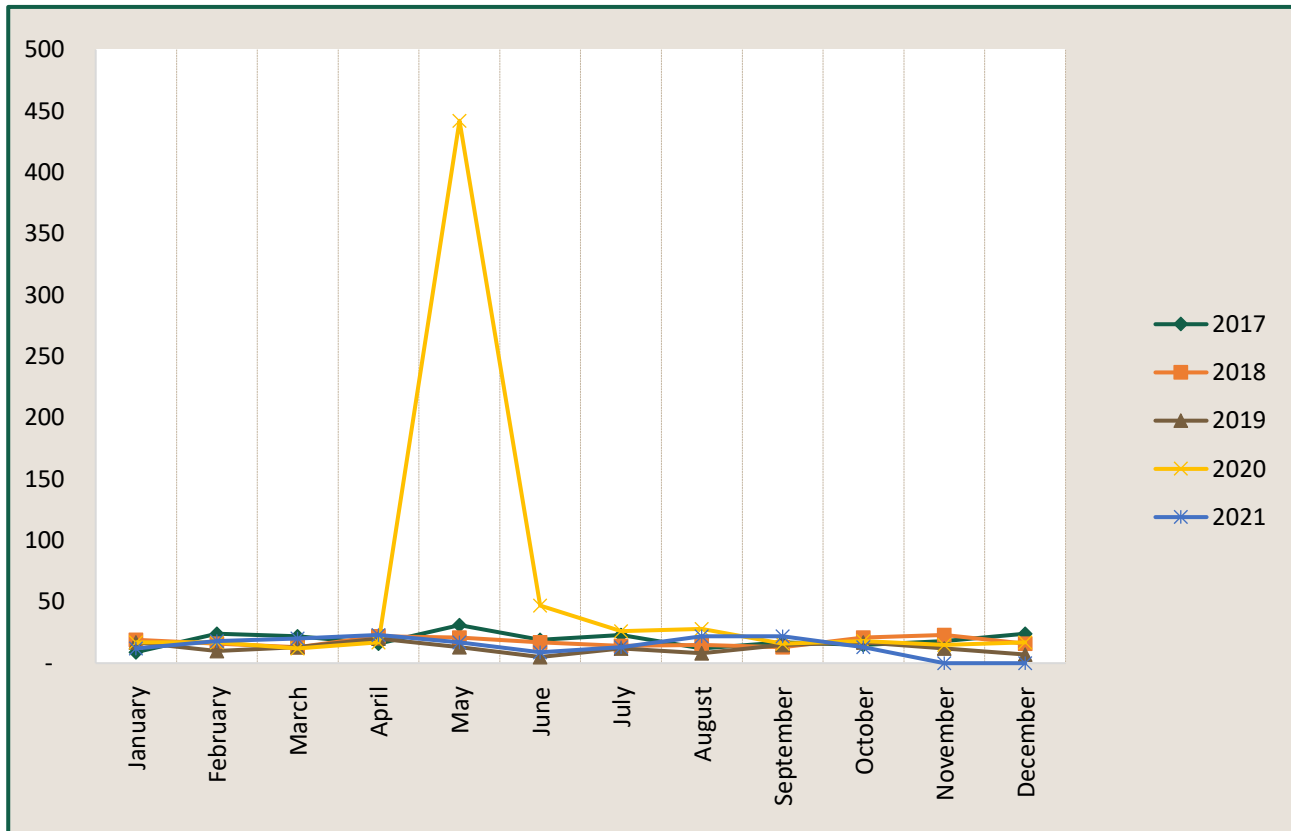
SPOKANE COUNTY SHERIFF'S OFFICE

Regional Intelligence Group 9

Identity Theft - Spokane Valley



Time Period: October 2021



	2017	2018	2019	2020	2021
January	9	19	17	17	12
February	24	16	10	17	18
March	22	13	13	12	20
April	16	22	20	17	23
May	31	21	13	442	17
June	19	17	5	47	9
July	23	14	12	26	13
August	12	15	8	28	22
September	17	13	15	16	22
October	15	21	17	18	13
November	18	23	12	15	-
December	24	16	7	17	-
Grand Total	230	210	149	672	169

*IBR Offense: Identity Theft 26F

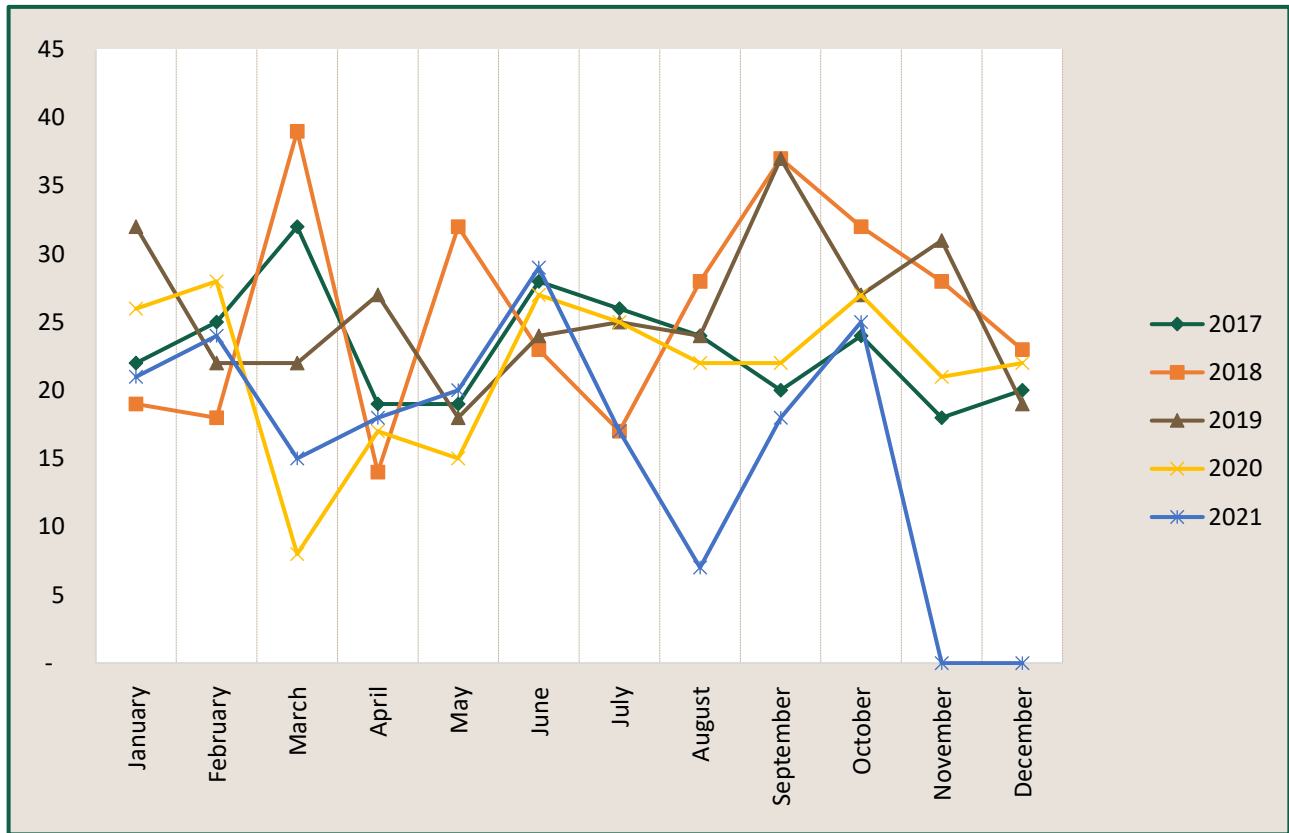
SPOKANE COUNTY SHERIFF'S OFFICE

Regional Intelligence Group 9

DUI - Spokane Valley



Time Period: October 2021



	2017	2018	2019	2020	2021
January	22	19	32	26	21
February	25	18	22	28	24
March	32	39	22	8	15
April	19	14	27	17	18
May	19	32	18	15	20
June	28	23	24	27	29
July	26	17	25	25	17
August	24	28	24	22	7
September	20	37	37	22	18
October	24	32	27	27	25
November	18	28	31	21	-
December	20	23	19	22	-
Grand Total	277	310	308	260	194

* IBR Offense: DUI 90D

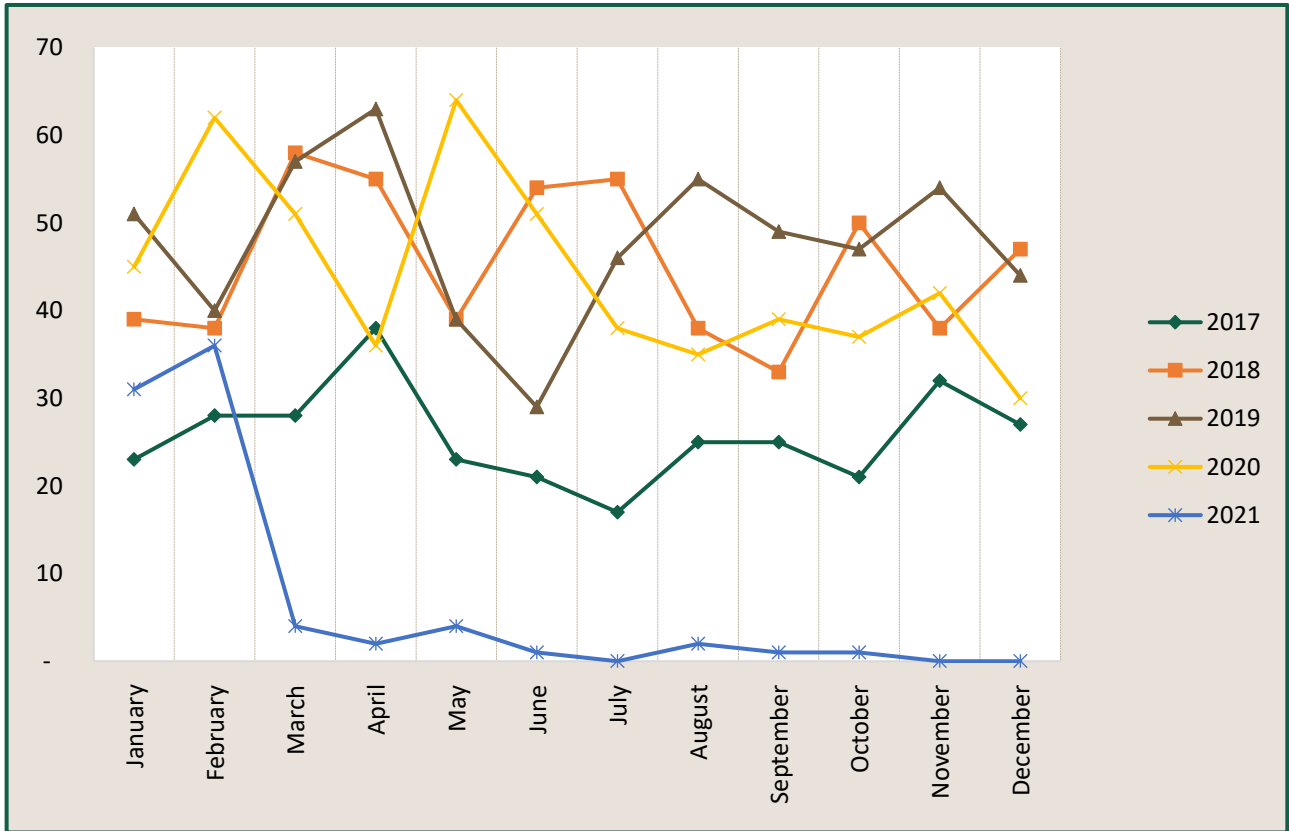
SPOKANE COUNTY SHERIFF'S OFFICE

Regional Intelligence Group 9

Drugs - Spokane Valley



Time Period: October 2021



	2017	2018	2019	2020	2021
January	23	39	51	45	31
February	28	38	40	62	36
March	28	58	57	51	4
April	38	55	63	36	2
May	23	39	39	64	4
June	21	54	29	51	1
July	17	55	46	38	-
August	25	38	55	35	2
September	25	33	49	39	1
October	21	50	47	37	1
November	32	38	54	42	-
December	27	47	44	30	-
Grand Total	308	544	574	530	82

* IBR Offense: Drugs/Narcotics Violations 35A and Drug Equipment Violations 35B

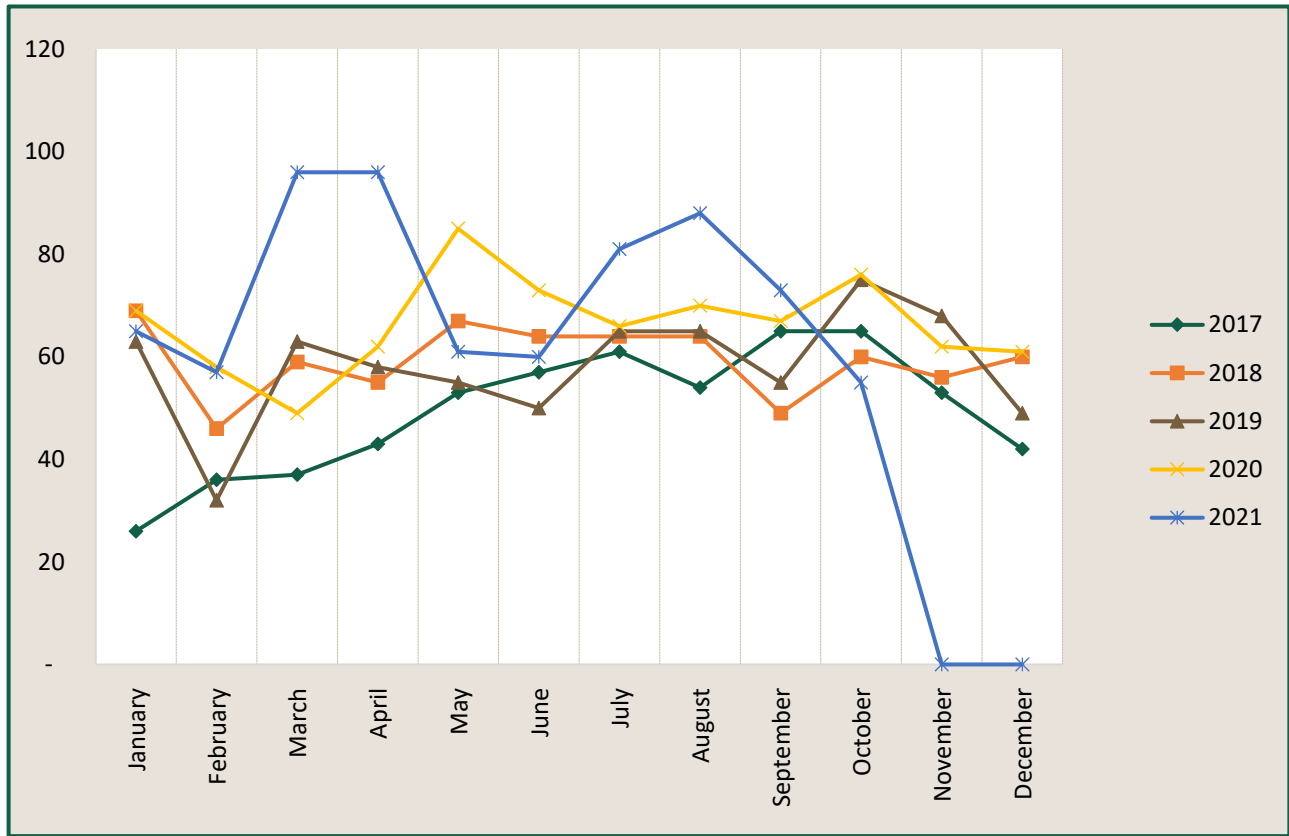
SPOKANE COUNTY SHERIFF'S OFFICE

Regional Intelligence Group 9

Fraud - Spokane Valley



Time Period: October 2021



	2017	2018	2019	2020	2021
January	26	69	63	69	65
February	36	46	32	58	57
March	37	59	63	49	96
April	43	55	58	62	96
May	53	67	55	85	61
June	57	64	50	73	60
July	61	64	65	66	81
August	54	64	65	70	88
September	65	49	55	67	73
October	65	60	75	76	55
November	53	56	68	62	-
December	42	60	49	61	-
Grand Total	592	713	698	798	732

* IBR Offense: Pretenses/Swindling/Con Games 26A, Fraud - Credit Card/ATM 26B, and Fraud - False & Fraud - Impersonation 26C

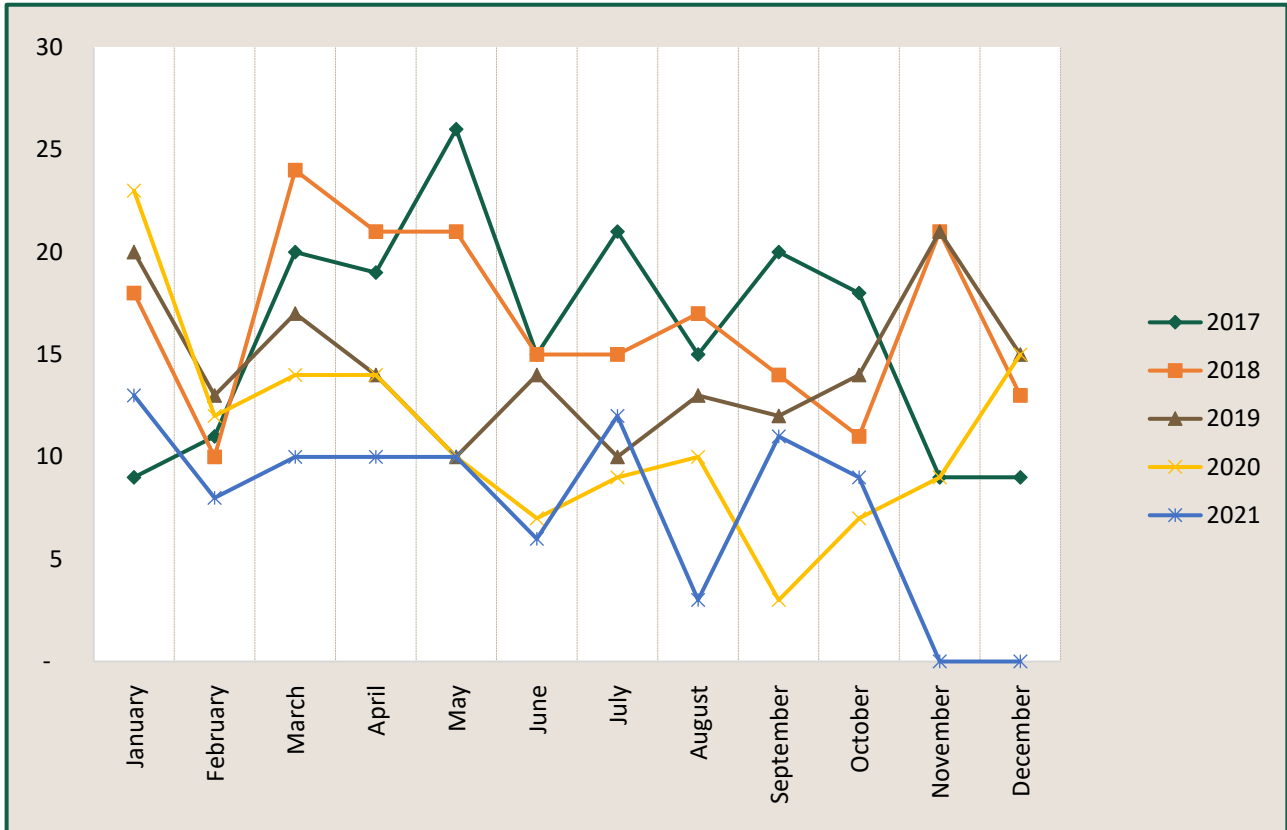
SPOKANE COUNTY SHERIFF'S OFFICE

Regional Intelligence Group 9

Forgery - Spokane Valley



Time Period: October 2021



	2017	2018	2019	2020	2021
January	9	18	20	23	13
February	11	10	13	12	8
March	20	24	17	14	10
April	19	21	14	14	10
May	26	21	10	10	10
June	15	15	14	7	6
July	21	15	10	9	12
August	15	17	13	10	3
September	20	14	12	3	11
October	18	11	14	7	9
November	9	21	21	9	-
December	9	13	15	15	-
Grand Total	192	200	173	133	92

*IBR Offense: Counterfeiting/Forgery 250

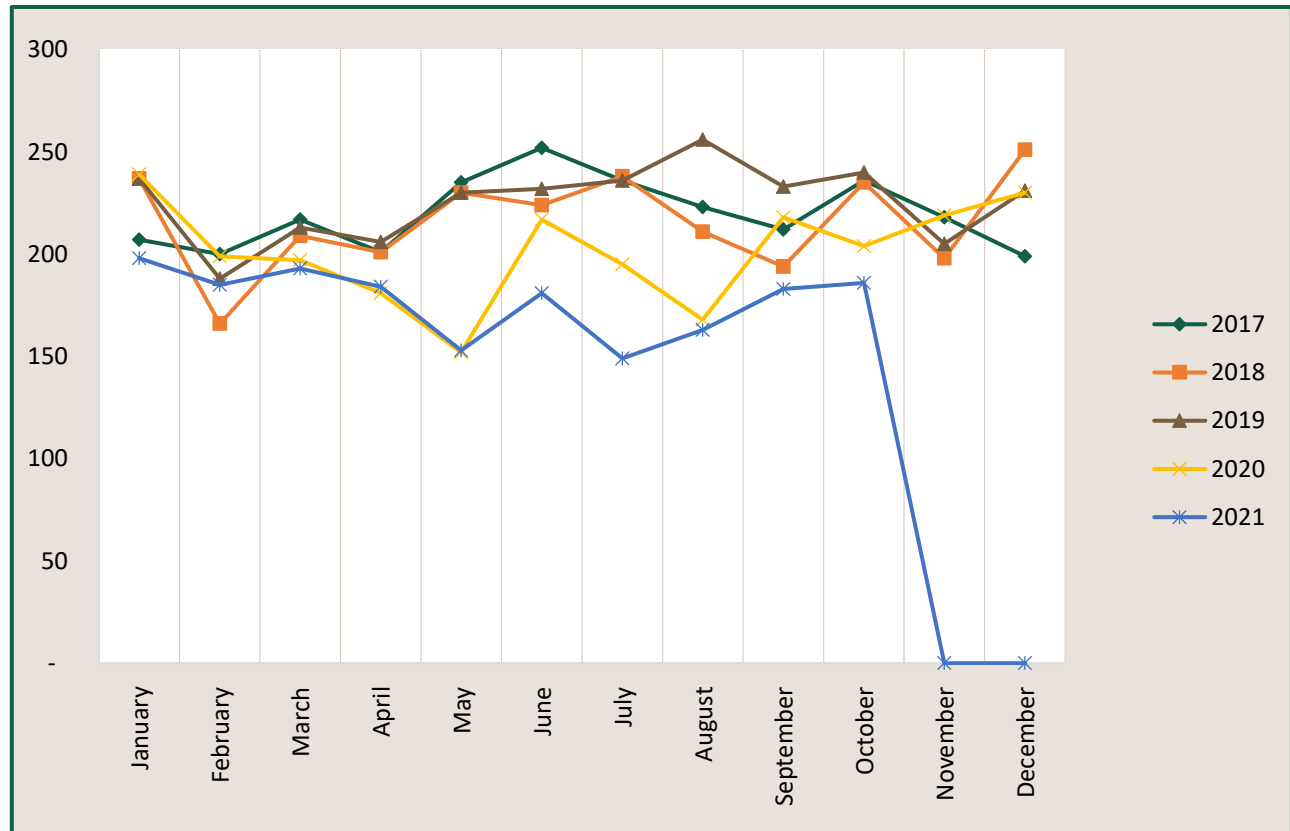
SPOKANE COUNTY SHERIFF'S OFFICE

Regional Intelligence Group 9

Theft - Spokane Valley



Time Period: October 2021



	2017	2018	2019	2020	2021
January	207	237	237	239	198
February	200	166	188	199	185
March	217	209	213	197	193
April	201	201	206	181	184
May	235	230	230	152	153
June	252	224	232	217	181
July	236	238	236	195	149
August	223	211	256	168	163
September	212	194	233	218	183
October	236	235	240	204	186
November	218	198	205	219	-
December	199	251	231	230	-
Grand Total	2,636	2,594	2,707	2,419	1,775

* IBR Offense: Theft - Pocket-Picking 23A, Theft - Purse-Snatching 23B, Theft - Shoplifting 23C, Theft From Building 23D, Theft From Coin-Operated Machine 23E, Theft of Motor Vehicle Parts/Accessories 23G, and Theft-All Other 23H

Produced: 11/08/2021

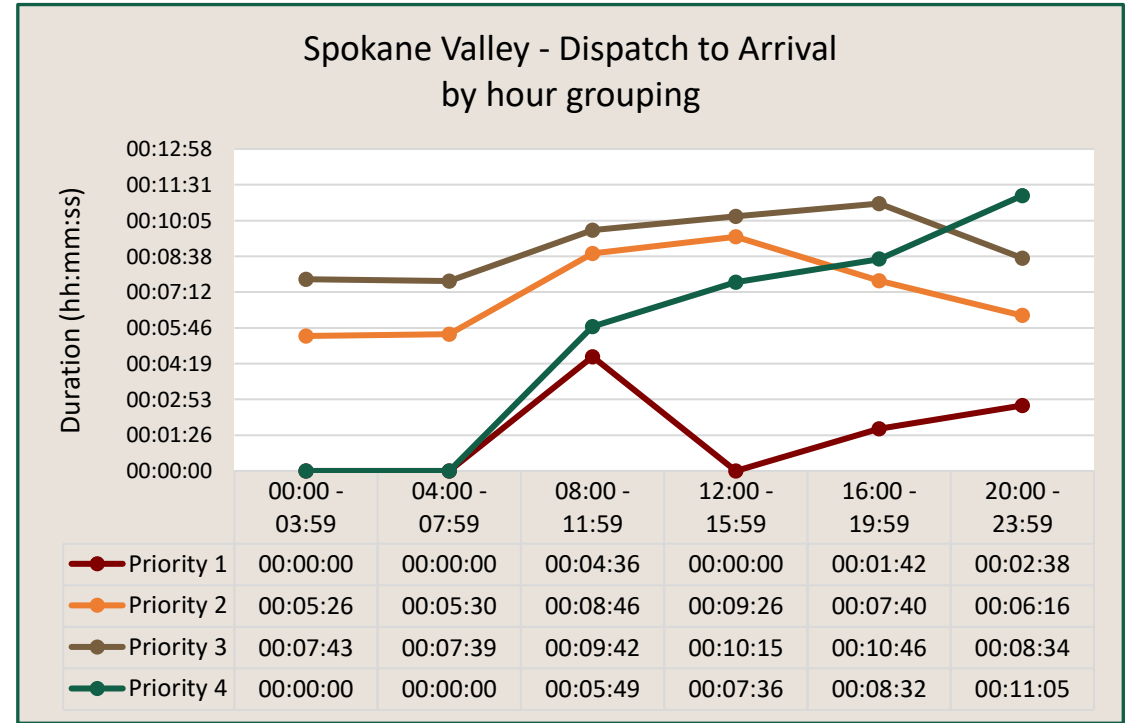
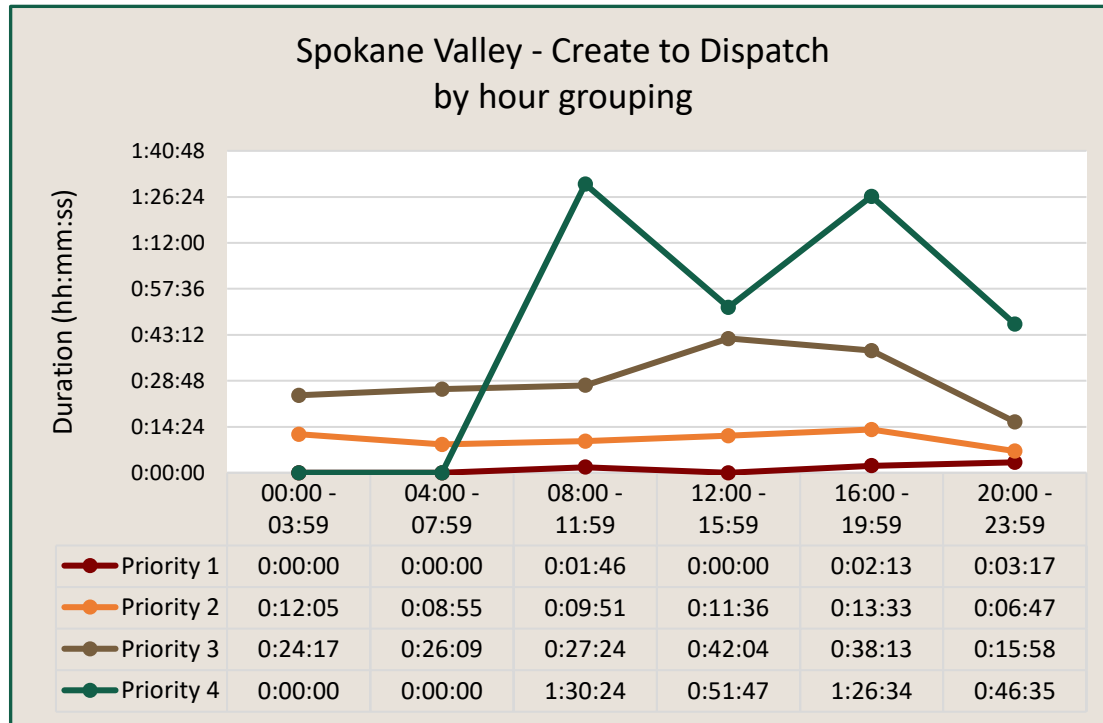


Spokane County Sheriff's Office

Response Times by Priority

October 2021

	Spokane Valley			SCSO Unincorporated			SCSO All		
Priority	Create To Dispatch	Dispatch To Arrive	Create To Arrive	Create To Dispatch	Dispatch To Arrive	Create To Arrive	Create To Dispatch	Dispatch To Arrive	Create To Arrive
1	00:02:27	00:03:14	00:05:41	00:02:22	00:08:19	00:10:41	00:02:25	00:05:47	00:08:11
2	00:10:27	00:07:31	00:17:58	00:13:24	00:11:40	00:25:04	00:11:45	00:09:20	00:21:05
3	00:31:20	00:09:36	00:40:56	00:34:27	00:14:11	00:48:38	00:32:44	00:11:40	00:44:23
4	01:07:52	00:07:35	01:15:27	00:22:59	00:07:38	00:30:37	00:47:45	00:07:36	00:55:21
Totals	0:23:01	0:08:39	0:31:40	0:25:19	0:12:59	0:38:18	0:24:02	0:10:35	0:34:37

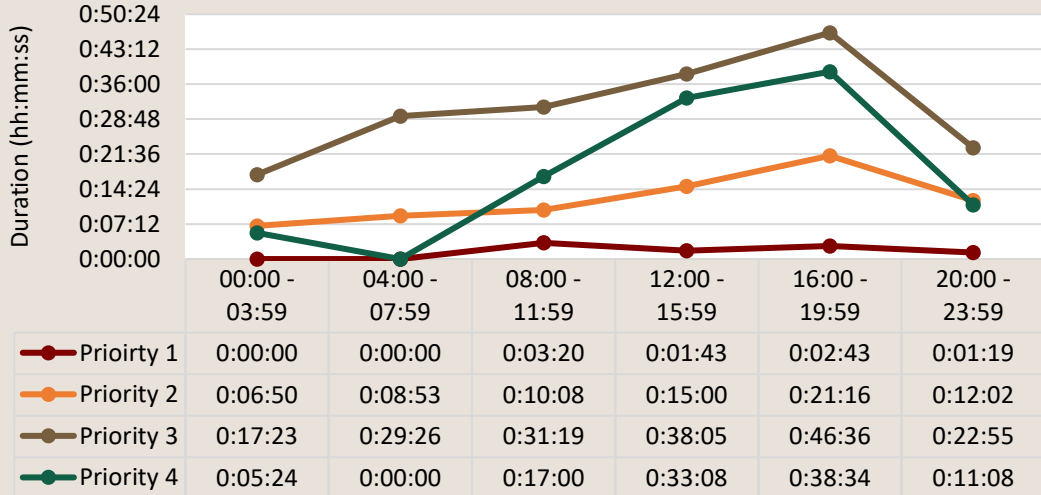




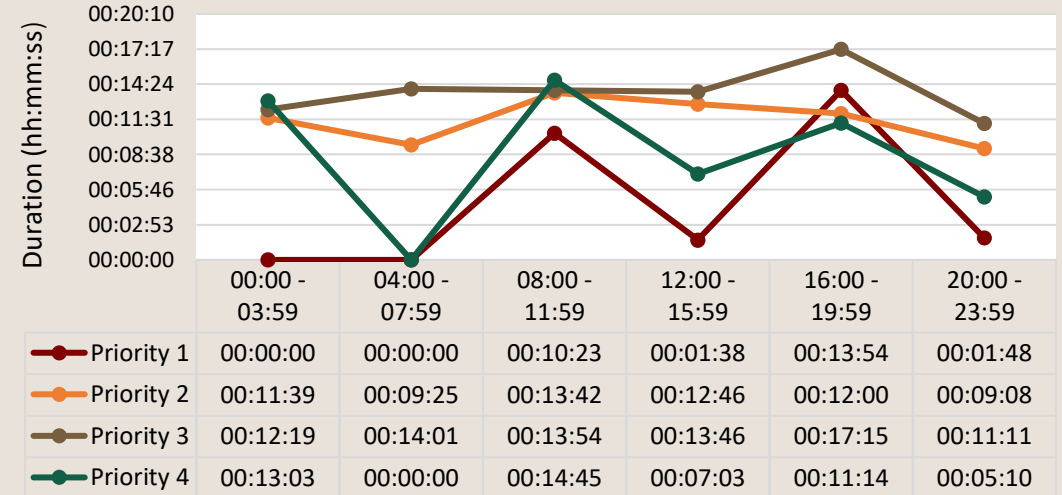
Spokane County Sheriff's Office Response Times by Priority

October 2021

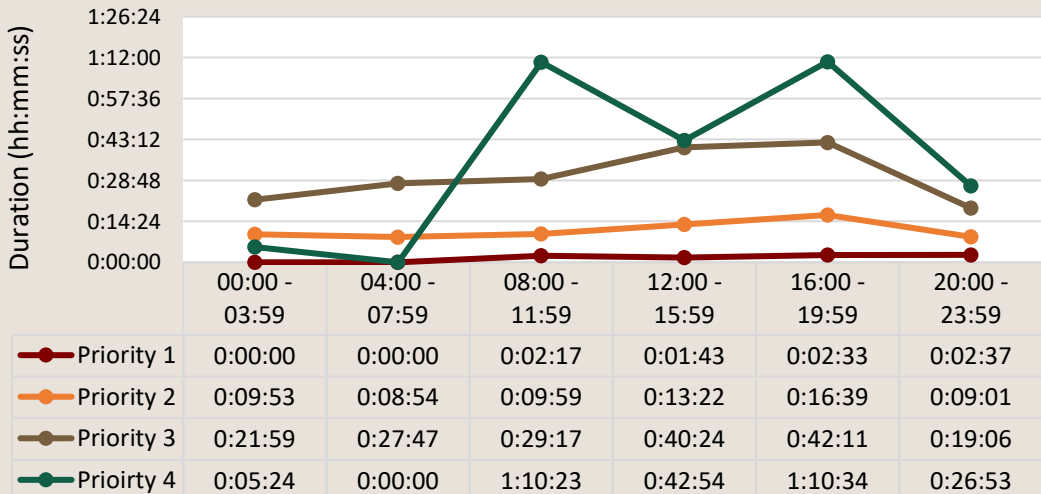
SCSO Unincorporated- Create to Dispatch by hour grouping



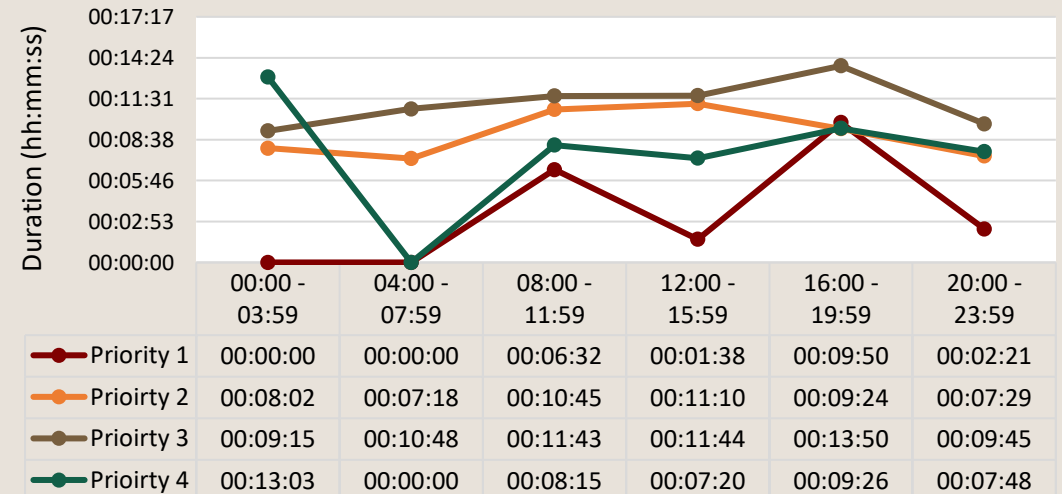
SCSO Unincorporated- Dispatch to Arrival by hour grouping



SCSO All - Create to Dispatch by hour grouping



SCSO All - Dispatch to Arrival by hour grouping



SPOKANE COUNTY SHERIFF'S OFFICE

Regional Intelligence Group 9

Call Activity Heat Maps - Spokane Valley



October 2021 Citizen Calls by Day of Week and Hour

	Sunday	Monday	Tuesday	Wednesday	Thursday	Friday	Saturday	Total
0	28	19	6	11	9	17	25	115
1	20	10	9	6	11	18	21	95
2	20	14	10	8	6	10	11	79
3	9	8	9	14	7	15	12	74
4	11	9	6	12	6	9	14	67
5	5	5	3	12	14	13	12	64
6	15	18	18	13	9	11	13	97
7	14	25	15	17	15	23	24	133
8	21	19	20	26	26	34	17	163
9	33	35	27	32	27	33	28	215
10	26	31	22	36	28	48	27	218
11	31	40	31	26	37	46	42	253
12	37	45	26	39	30	50	29	256
13	36	29	35	31	27	40	41	239
14	41	29	29	35	35	50	43	262
15	46	35	35	34	39	61	52	302
16	44	35	26	40	46	50	54	295
17	44	27	32	42	40	58	57	300
18	49	35	33	43	30	50	53	293
19	34	32	27	28	32	49	37	239
20	26	23	31	19	28	37	34	198
21	24	34	19	18	22	34	34	185
22	27	17	18	21	25	33	39	180
23	27	16	11	14	15	33	33	149
Total	668	590	498	577	564	822	752	4471

Total Deputy Involved Incidents by Day of Week and Hour

	Sunday	Monday	Tuesday	Wednesday	Thursday	Friday	Saturday	Total
0	22	16	5	9	11	17	21	101
1	15	7	6	8	6	11	13	66
2	10	9	7	5	13	8	10	62
3	9	7	6	12	5	12	9	60
4	5	10	6	10	4	10	13	58
5	5	2	3	6	18	9	5	48
6	9	13	16	12	6	6	11	73
7	12	25	17	34	25	21	20	154
8	15	19	19	30	27	21	13	144
9	28	27	21	26	25	29	20	176
10	18	27	17	37	30	32	19	180
11	25	37	32	32	27	41	25	219
12	26	37	17	36	23	33	17	189
13	23	21	21	30	30	33	24	182
14	23	20	32	34	31	33	20	193
15	26	23	27	25	32	35	29	197
16	19	26	19	25	23	18	29	159
17	23	15	23	23	17	26	37	164
18	33	20	14	25	17	24	33	166
19	17	22	16	10	18	30	23	136
20	18	20	23	13	29	23	26	152
21	16	24	12	12	17	27	16	124
22	28	13	17	15	14	26	25	138
23	21	18	11	8	19	20	28	125
Total	446	458	387	477	467	545	486	3266

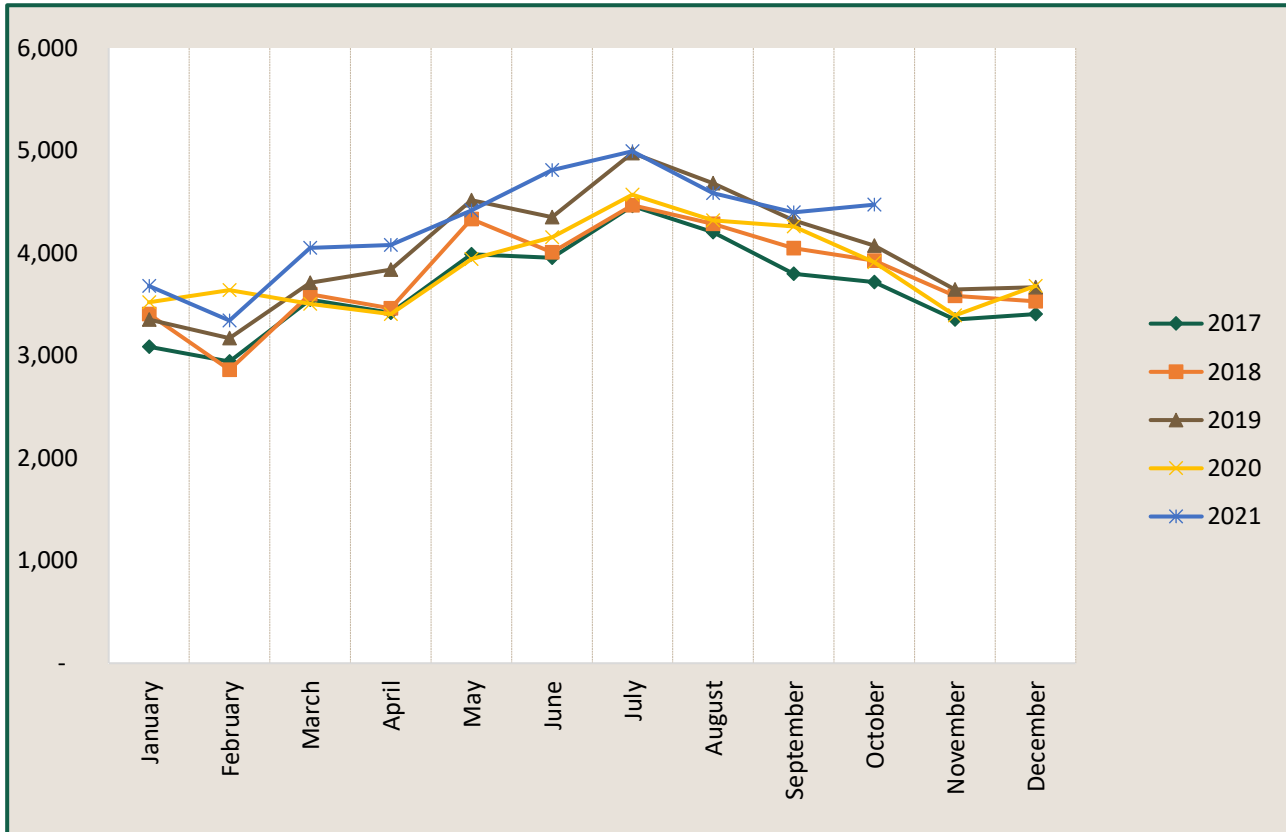
SPOKANE COUNTY SHERIFF'S OFFICE

Regional Intelligence Group 9

Citizen Call For Service (CFS) - Spokane Valley



Time Period: October 2021



	2017	2018	2019	2020	2021
January	3,088	3,405	3,351	3,521	3,680
February	2,942	2,862	3,170	3,638	3,342
March	3,546	3,597	3,711	3,504	4,052
April	3,416	3,460	3,839	3,405	4,078
May	3,987	4,331	4,516	3,941	4,415
June	3,955	4,006	4,349	4,153	4,810
July	4,459	4,467	4,976	4,570	4,993
August	4,204	4,286	4,680	4,319	4,583
September	3,799	4,048	4,318	4,259	4,397
October	3,718	3,927	4,072	3,909	4,471
November	3,353	3,582	3,646	3,392	
December	3,406	3,530	3,668	3,678	
Grand Total	43,873	45,501	48,296	46,289	42,821

*excludes calls handled by Crime Check only

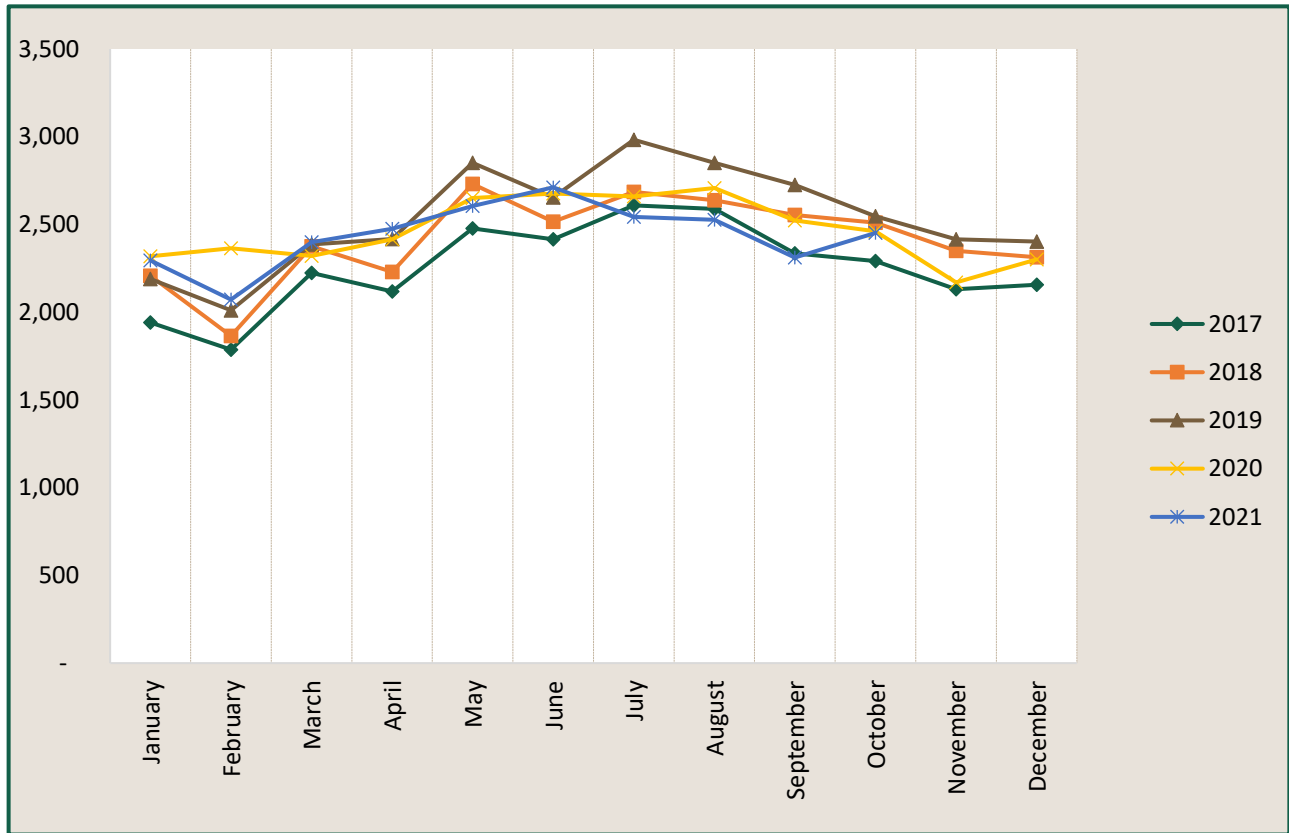
SPOKANE COUNTY SHERIFF'S OFFICE

Regional Intelligence Group 9

Citizen CFS With Deputy Response - Spokane Valley



Time Period: October 2021



	2017	2018	2019	2020	2021
January	1,941	2,208	2,189	2,319	2,295
February	1,787	1,865	2,011	2,364	2,072
March	2,224	2,375	2,386	2,321	2,399
April	2,119	2,230	2,418	2,416	2,475
May	2,478	2,731	2,851	2,650	2,605
June	2,416	2,516	2,654	2,677	2,712
July	2,609	2,685	2,983	2,660	2,544
August	2,589	2,639	2,852	2,708	2,527
September	2,336	2,555	2,725	2,524	2,312
October	2,292	2,510	2,547	2,462	2,453
November	2,131	2,350	2,416	2,170	
December	2,157	2,314	2,402	2,301	
Grand Total	27,079	28,978	30,434	29,572	24,394

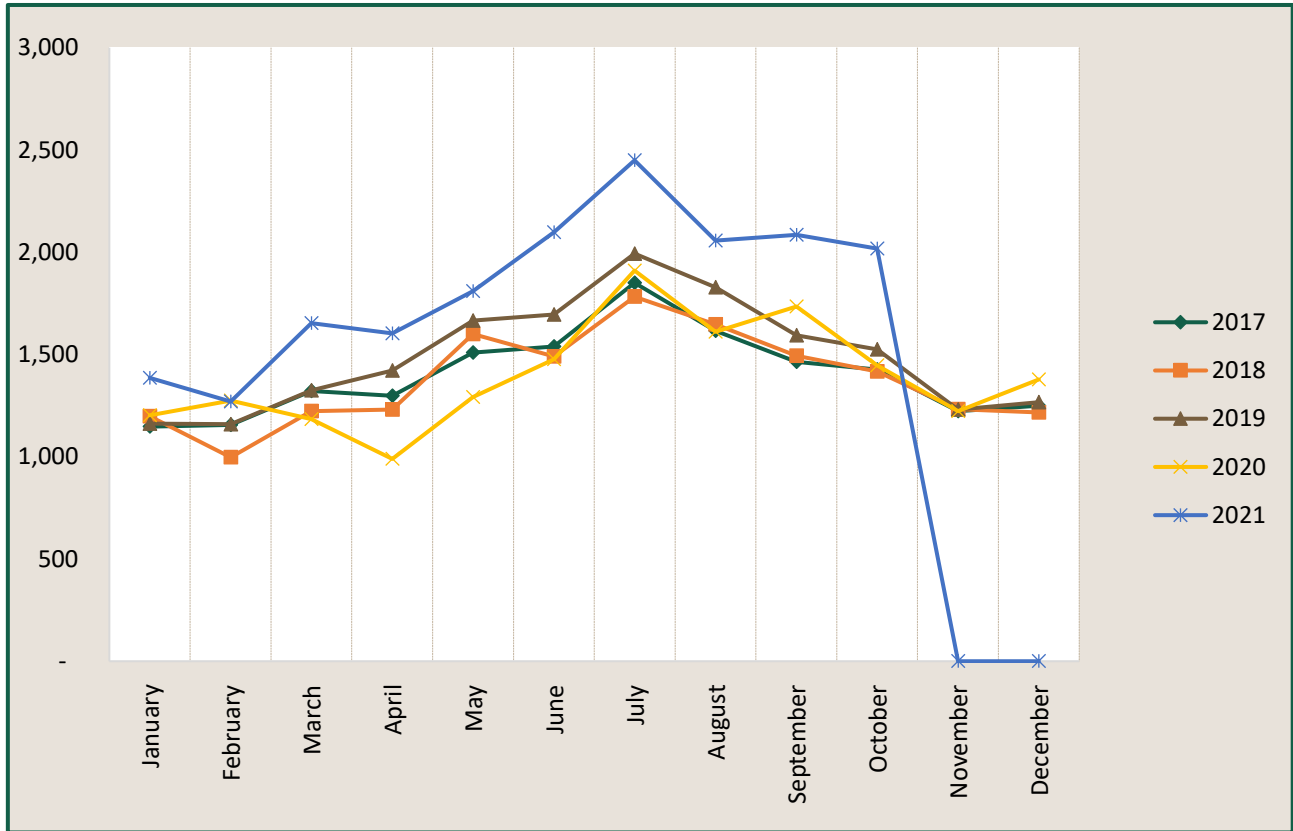
SPOKANE COUNTY SHERIFF'S OFFICE

Regional Intelligence Group 9

Citizen CFS Without Deputy Response - Spokane Valley



Time Period: October 2021



	2017	2018	2019	2020	2021
January	1,147	1,197	1,162	1,202	1,385
February	1,155	997	1,159	1,274	1,270
March	1,322	1,222	1,325	1,183	1,653
April	1,297	1,230	1,421	989	1,603
May	1,509	1,600	1,665	1,291	1,810
June	1,539	1,490	1,695	1,476	2,098
July	1,850	1,782	1,993	1,910	2,449
August	1,615	1,647	1,828	1,611	2,056
September	1,463	1,493	1,593	1,735	2,085
October	1,426	1,417	1,525	1,447	2,018
November	1,222	1,232	1,230	1,222	
December	1,249	1,216	1,266	1,377	
Grand Total	16,794	16,523	17,862	16,717	18,427

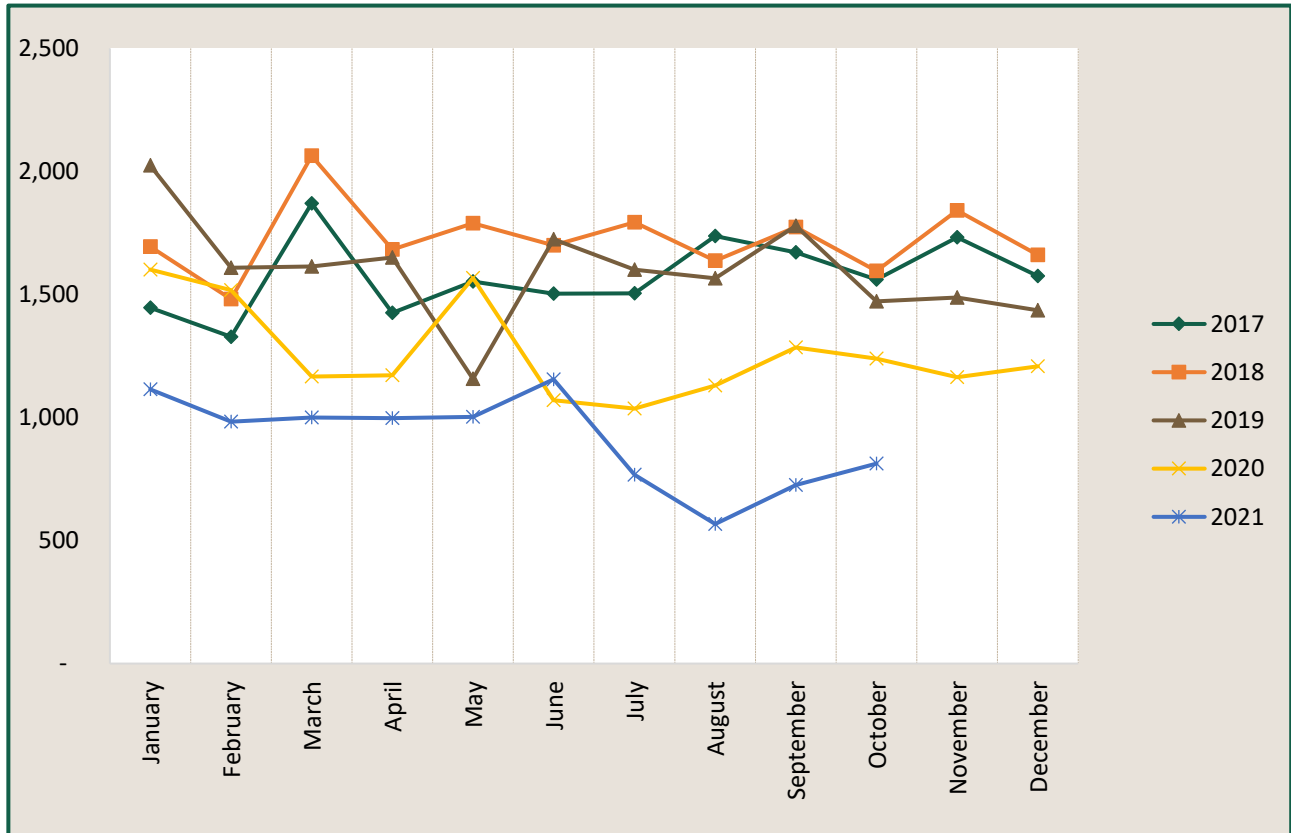
SPOKANE COUNTY SHERIFF'S OFFICE

Regional Intelligence Group 9

Deputy Initiated Incidents - Spokane Valley



Time Period: October 2021



	2017	2018	2019	2020	2021
January	1,446	1,694	2,024	1,601	1,114
February	1,328	1,481	1,608	1,518	983
March	1,870	2,063	1,614	1,166	1,000
April	1,425	1,683	1,650	1,172	997
May	1,553	1,789	1,157	1,567	1,003
June	1,503	1,699	1,724	1,070	1,155
July	1,504	1,793	1,600	1,036	767
August	1,737	1,637	1,565	1,130	567
September	1,671	1,773	1,779	1,285	725
October	1,560	1,595	1,472	1,239	813
November	1,732	1,841	1,487	1,164	
December	1,574	1,661	1,436	1,208	
Grand Total	18,903	20,709	19,116	15,156	9,124

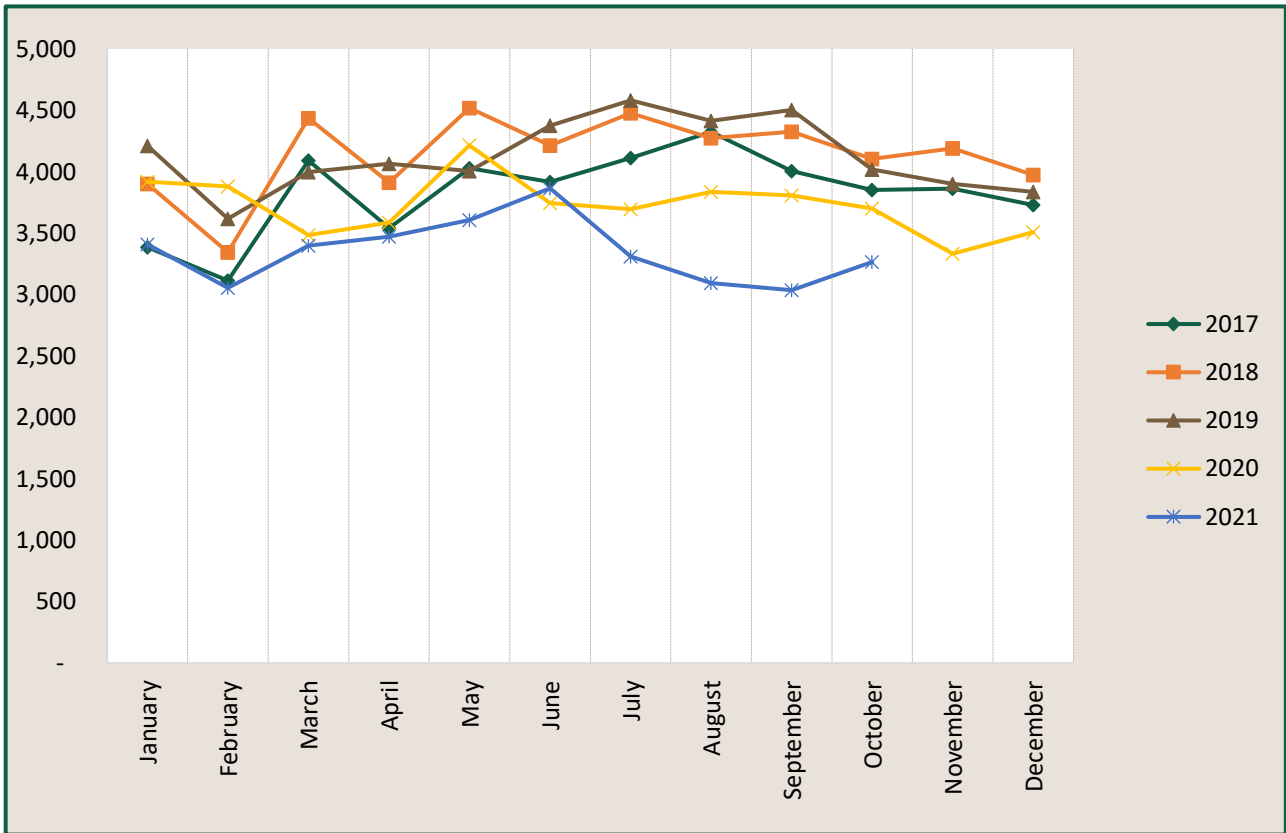
SPOKANE COUNTY SHERIFF'S OFFICE

Regional Intelligence Group 9

Total Deputy Involved Incidents - Spokane Valley



Time Period: October 2021



	2017	2018	2019	2020	2021
January	3,387	3,902	4,213	3,920	3,409
February	3,115	3,346	3,619	3,882	3,055
March	4,094	4,438	4,000	3,487	3,399
April	3,544	3,913	4,068	3,588	3,472
May	4,031	4,520	4,008	4,217	3,608
June	3,919	4,215	4,378	3,747	3,867
July	4,113	4,478	4,583	3,696	3,311
August	4,326	4,276	4,417	3,838	3,094
September	4,007	4,328	4,504	3,809	3,037
October	3,852	4,105	4,019	3,701	3,266
November	3,863	4,191	3,903	3,334	
December	3,731	3,975	3,838	3,509	
Grand Total	45,982	49,687	49,550	44,728	33,518

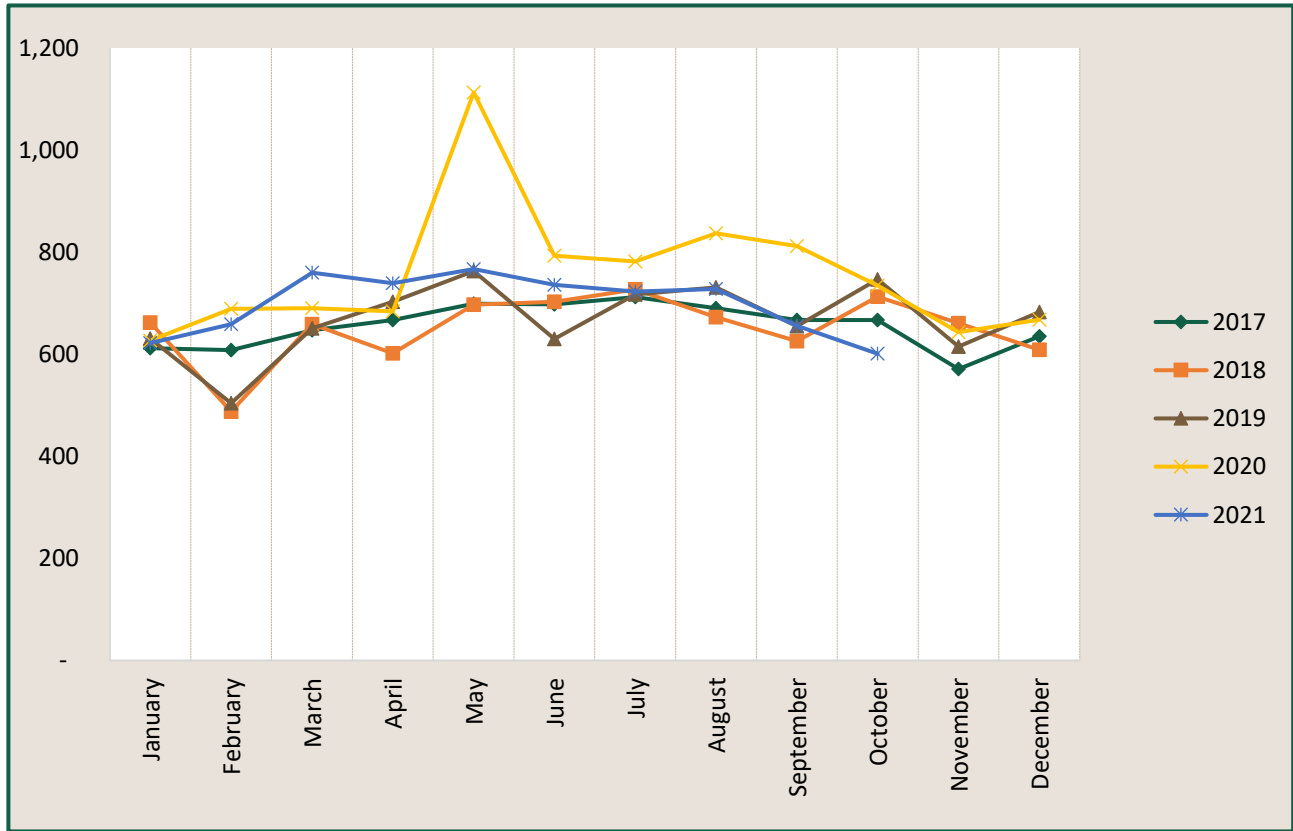
SPOKANE COUNTY SHERIFF'S OFFICE

Regional Intelligence Group 9

Crime Check Call For Service (CFS) - Spokane Valley



Time Period: October 2021



	2017	2018	2019	2020	2021
January	612	662	631	627	622
February	608	488	504	689	659
March	647	659	651	690	760
April	667	602	703	684	739
May	699	697	763	1,113	767
June	698	703	630	793	736
July	712	727	717	782	723
August	690	673	731	837	728
September	667	626	655	812	656
October	667	713	747	735	601
November	571	661	615	643	
December	635	609	683	668	
Grand Total	7,873	7,820	8,030	9,073	6,991

SPOKANE COUNTY SHERIFF'S OFFICE

Regional Intelligence Group 9

Ticket Counts



Date Range: October 2021

Ticket Type	Spokane Valley Districts		Unincorporated Districts		All Districts	
	Ticket Count	Charges Count	Ticket Count	Charges Count	Ticket Count	Charges Count
Criminal Non Traffic	50	58	61	78	111	136
Criminal Traffic	27	35	29	34	56	69
Infraction Non Traffic	3	3	3	2	6	5
Infraction Traffic	187	246	139	189	326	435
Parking	2	2	0	0	2	2
Totals:	269	344	232	303	501	647

Ticket Type	Deer Park		Medical Lake		Millwood	
	Ticket Count	Charges Count	Ticket Count	Charges Count	Ticket Count	Charges Count
Criminal Non Traffic	1	1	0	0	2	3
Criminal Traffic	0	0	0	0	2	2
Infraction Non Traffic	0	0	0	0	0	0
Infraction Traffic	1	1	3	3	1	2
Parking	0	0	0	0	0	0
Totals:	2	2	3	3	5	7

SPOKANE COUNTY SHERIFF'S OFFICE

Regional Intelligence Group 9

Ticket Charge Details - Spokane Valley



Date Range: October 2021

Charge	Count
(blank)	1
05.04.032.14: DANGEROUS DOG VIOLATIONS	1
26.50.110.1: ORDER, PROTECT VIO DV	9
46.16A.030.2: OPER VEH W/O CRNT/PRPR REG & PLATE	2
46.16A.030.5.O: FL RENEW EXPIRED REG >2 MTHS	7
46.16A.180.2: OPER/POSSESS VEH W/O REGISTRATION	1
46.16A.200.7C: ALTER MAKE PLATE ILLEGIBLE/OBSCURED	1
46.20.015: DRIVING MOTOR VEHICLE WITH AN EXPIRED LICENSE WITH VALID IDENTIFICATION	15
46.20.024: ALLOW UNAUTHORIZED MINOR TO OPERATE MOTOR VEHICLE	1
46.20.342.1B: DWLS 2ND DEGREE	3
46.20.345: DRIVING W/LIC SUSPEND/REVOKED IN OTHER JURIS	1
46.20.500: CYCLE(OPERATE W/O ENDORSEMENT)	1
46.20.740: MV IGNITION INTERLOCK DRIVE VEH WO	2
46.30.020: OPERATING A MOTOR VEHICLE WITHOUT INSURANCE	42
46.37.020: LAMPS, OPERATE VEH WO HEADLGT WHEN REQ	1
46.37.050: DEFECTIVE LIGHTS	1
46.37.070.3: REAR CTR HI-MOUNTED STOP LAMP REQ	1
46.37.200: LAMPS, DEFECT TURN SIGNALS-STOP LAMPS	2
46.37.410: VEH WINDSHIELD WIPERS POSTERS	1
46.52.010.2.C: HIT AND RUN UNATTENDED-AID/ABET	1
46.52.010.2: HIT/RUN UNATTENDED PROPERTY	1
46.61.022: FAILURE TO STOP WHEN REQUESTED BY LAW ENFORCEMENT	1
46.61.050: DISREGARD TRAFFIC SIGNAL SIGN	4
46.61.055: FAIL TO OBEY TRAFFIC CONTROL LEGEND	1
46.61.135: VEH DRIVE AGAINST ONE WAY	1
46.61.140: IMPROPER LANE USAGE	3
46.61.145.1: FOLLOW VEHICLE TOO CLOSELY	8
46.61.180.1: FAIL TO YIELD TO VEHICLE APPROACHING INTERSECTION	2
46.61.185.1: FAIL YIELD LEFT TURN MOTOR VEHICLE	2
46.61.190.2: FAIL STOP AT STOP SIGN/INTERSECTION	2
46.61.190.3: FAIL YIELD AT YIELD SIGN/INTERSECTION	1
46.61.200: FAIL TO STOP AT INTERSECTION/STOP SIGN	1
46.61.205.1: FAIL YIELD PRIVATE RD MOTOR VEHICLE	1
46.61.212.1: FAIL TO YIELD STATIONARY EMERG VEH	1
46.61.290: TURN, PROHIBIT-IMPROPER	4
46.61.305: FAIL TO SIGNAL STOP-TURN UNSAFE LANE	1
46.61.370: PASS STOPPED SCHOOL BUS	1
46.61.400.05U: SPEED 5 OVER (40 OR UNDER)	46
46.61.400.1: SPEEDING TOO FAST FOR CONDITIONS	1
46.61.400.10U: SPEED 10 OVER (40 OR UNDER)	1
46.61.400.11U: SPEED 11 OVER (40 OR UNDER)	3
46.61.400.13U: SPEED 13 OVER (40 OR UNDER)	7
46.61.400.14: SPEED 14 OVER (OVER 40)	1
46.61.400.14U: SPEED 14 OVER (40 OR UNDER)	9
46.61.400.15: SPEED 15 OVER (OVER 40)	2
46.61.400.15U: SPEED 15 OVER (40 OR UNDER)	7
46.61.400.16U: SPEED 16 OVER (40 OR UNDER)	2
46.61.400.17U: SPEED 17 OVER (40 OR UNDER)	4
46.61.400.18U: SPEED 18 OVER (40 OR UNDER)	4
46.61.400.19: SPEED 19 OVER (OVER 40)	1
46.61.400.19U: SPEED 19 OVER (40 OR UNDER)	1
46.61.400.20U: SPEED 20 OVER (40 OR UNDER)	4

SPOKANE COUNTY SHERIFF'S OFFICE

Regional Intelligence Group 9

Ticket Charge Details - Spokane Valley



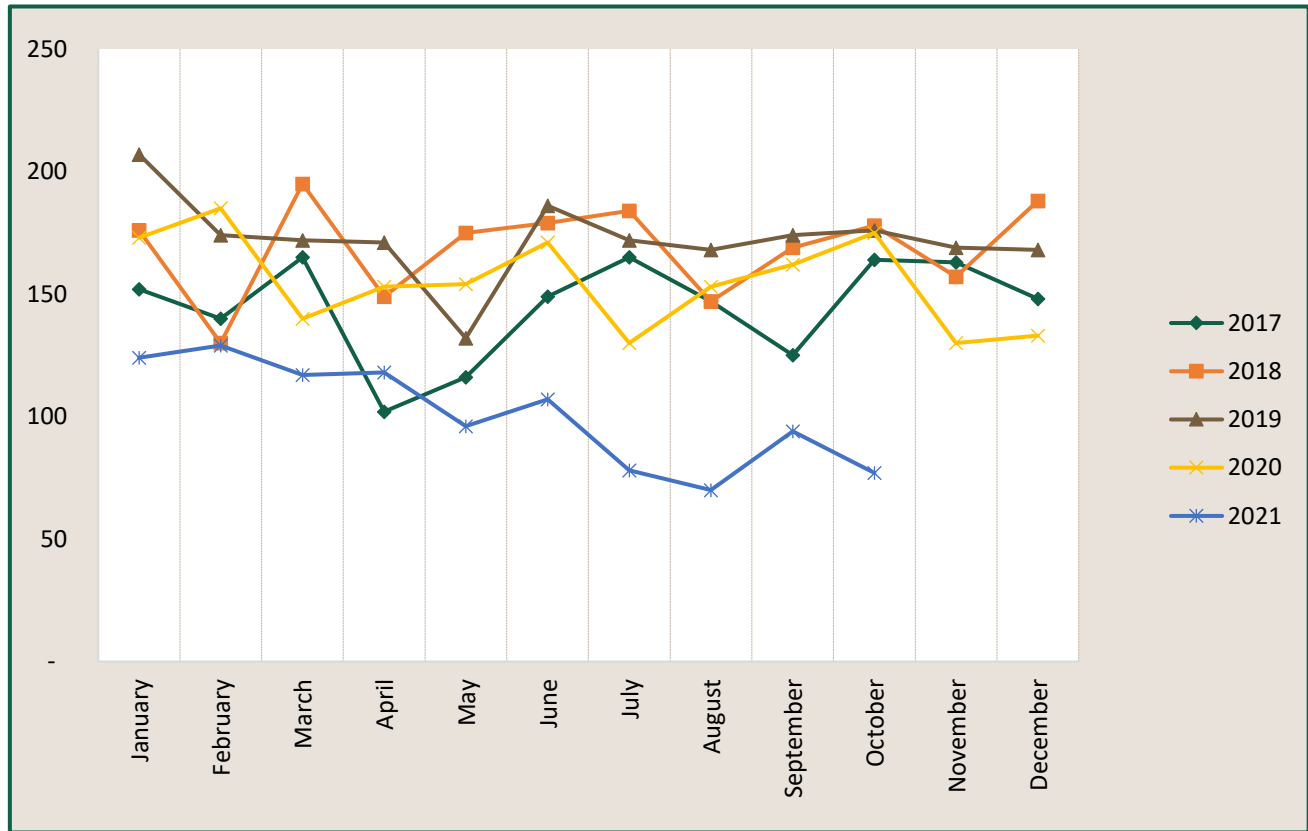
Date Range: October 2021

Charge	Count
46.61.400.21U: SPEED 21 OVER (40 OR UNDER)	2
46.61.400.22U: SPEED 22 OVER (40 OR UNDER)	2
46.61.400.23U: SPEED 23 OVER (40 OR UNDER)	2
46.61.400.26U: SPEED 26 OVER (40 OR UNDER)	1
46.61.400.28U: SPEED 28 OVER (40 OR UNDER)	3
46.61.400.30U: SPEED 30 OVER (40 OR UNDER)	1
46.61.400.31U: SPEED 31 OVER (40 OR UNDER)	1
46.61.400.36U: SPEED 35 OVER (40 OR UNDER)	1
46.61.440.01-05: SCHOOL/PLAYGROUND CROSSWALK SPEED 1-5 MPH OVER	2
46.61.440.11-15: SCHOOL/PLAYGROUND CROSSWALK SPEED 11-15 MPH OVER	1
46.61.500: RECKLESS DRIVING	6
46.61.502: OLD CODE:VEH(DWUIL/DRUG)NEW	19
46.61.503: DRIVER <21 YO CONSUME ALCOHOL/MARIJU	1
46.61.519: VEH(LIQ/OPEN CONTAINER)	2
46.61.525: NEGLIGENT DRIVING 2 DEGREE	2
46.61.570: STOPPING STANDING OR PARKING WHERE PROHIBITED	2
46.61.635: FOLLOW TOO CLOSE TO FIRE APPARATUS (500 FT)	2
46.61.670: VEH DRIVE WITH WHEELS OFF ROADWAY	1
46.61.672.1: PER ELECTRONIC DEVICE WHILE DRIVING	8
46.61.672.4: PER ELECTRONIC DEV DRIVE 2ND/SUBSEQ	1
46.61.673: DRIVE DANGEROUSLY DISTRACTED	1
46.61.688.3: SAFETY BELT IMPROPERLY FASTENED	1
46.61.688.4: ALLOW UNDER 16 RIDE WITHOUT SEATBELT	1
46.61.688: FAIL TO WEAR SAFETY BELT	9
66.44.270 GM: LIQUOR MINOR POSSESS-CONSUME-ACQUIRE-FURNISH	1
66.44.270.2A: LIQUOR MIP	1
70A.200.060.2A: LITTERING LESS/EQUAL 1 CU FT	1
9.41.050.1A: CARRY CONCEALED PISTOL W/OUT PERMIT	1
9.41.250: WEAPONS VIO, POSS DANGEROUS WEAPON [POSSESS]	1
9A.36.041.2: ASSAULT 4TH DEGREE	16
9A.36.050: RECK ENDANGER	1
9A.48.090.1A: MALICIOUS MISCHIEF-3D	1
9A.48.090: MALICIOUS MISCHIEF-3	6
9A.52.070: TRESPASS 1	1
9A.52.080: TRESPASS 2	1
9A.52.100.1: VEHICLE PROWLING 2ND DEGREE	2
9A.56.050: OLD CODE: THEFT-3D	12
9A.76.020: OBSTRUCT LE OFF	1
9A.76.040: OBSTRUCT GOVT-RESISTING ARREST	1
9A.76.175: OBSTRUCT GOVT-MAKING FALSE OR MISLEADING STATEMENT TO PUBLIC SERVANT	4
Grand Total	345

SPOKANE COUNTY SHERIFF'S OFFICE
 Regional Intelligence Group 9
 Criminal Ticket Counts - Spokane Valley



Time Period: October 2021



	2017	2018	2019	2020	2021
January	152	176	207	173	124
February	140	130	174	185	129
March	165	195	172	140	117
April	102	149	171	153	118
May	116	175	132	154	96
June	149	179	186	171	107
July	165	184	172	130	78
August	147	147	168	153	70
September	125	169	174	162	94
October	164	178	176	175	77
November	163	157	169	130	
December	148	188	168	133	
Grand Total	1,736	2,027	2,069	1,859	1,010

*Ticket type of Criminal Non Traffic & Criminal Traffic

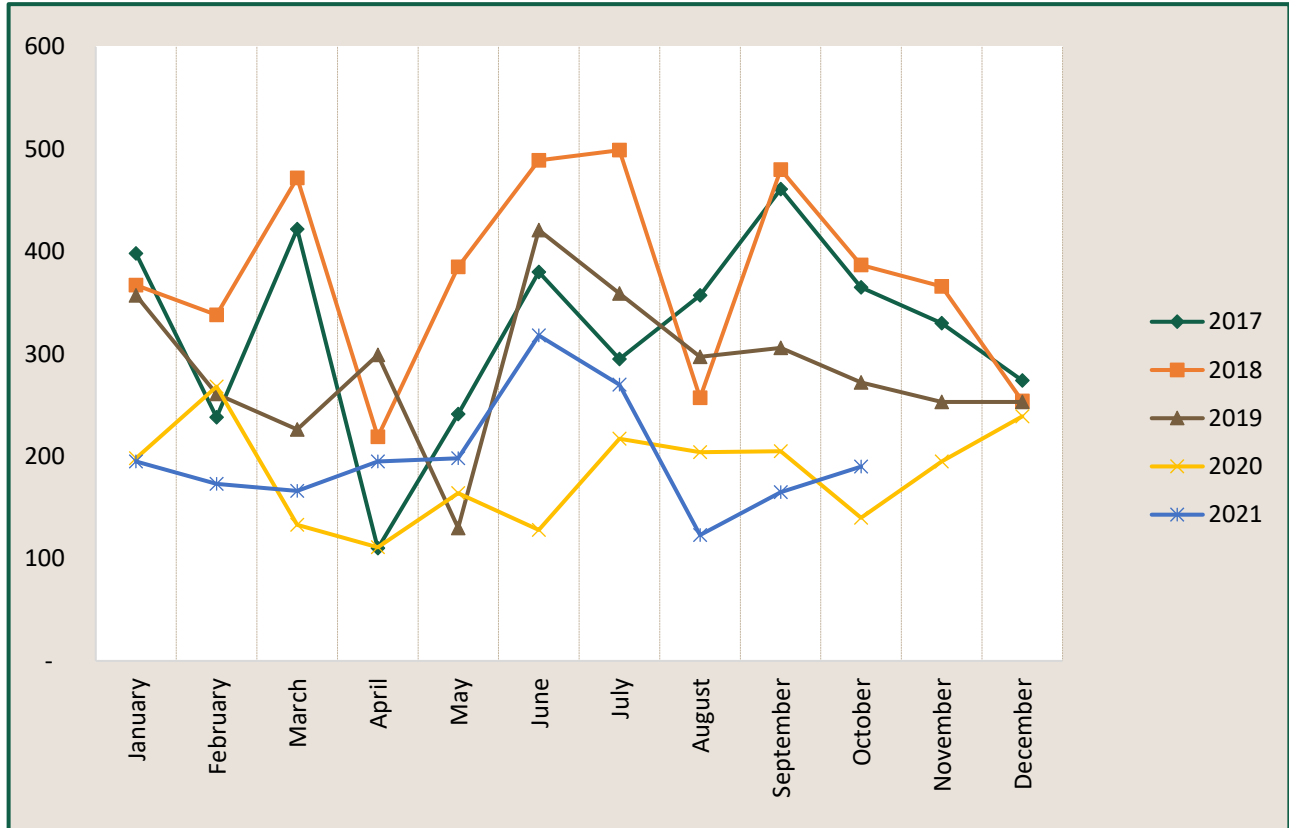
SPOKANE COUNTY SHERIFF'S OFFICE

Regional Intelligence Group 9

Non - Criminal Ticket Counts - Spokane Valley



Time Period: October 2021



	2017	2018	2019	2020	2021
January	398	367	357	198	195
February	238	338	261	268	173
March	422	472	226	133	166
April	110	219	299	111	195
May	241	385	130	164	198
June	380	489	421	128	318
July	295	499	359	217	270
August	357	257	297	204	123
September	461	480	306	205	165
October	365	387	272	140	190
November	330	366	253	195	
December	274	254	253	239	
Grand Total	3,871	4,513	3,434	2,202	1,993

*Ticket Type of Infraction Non Traffic & Infraction Traffic

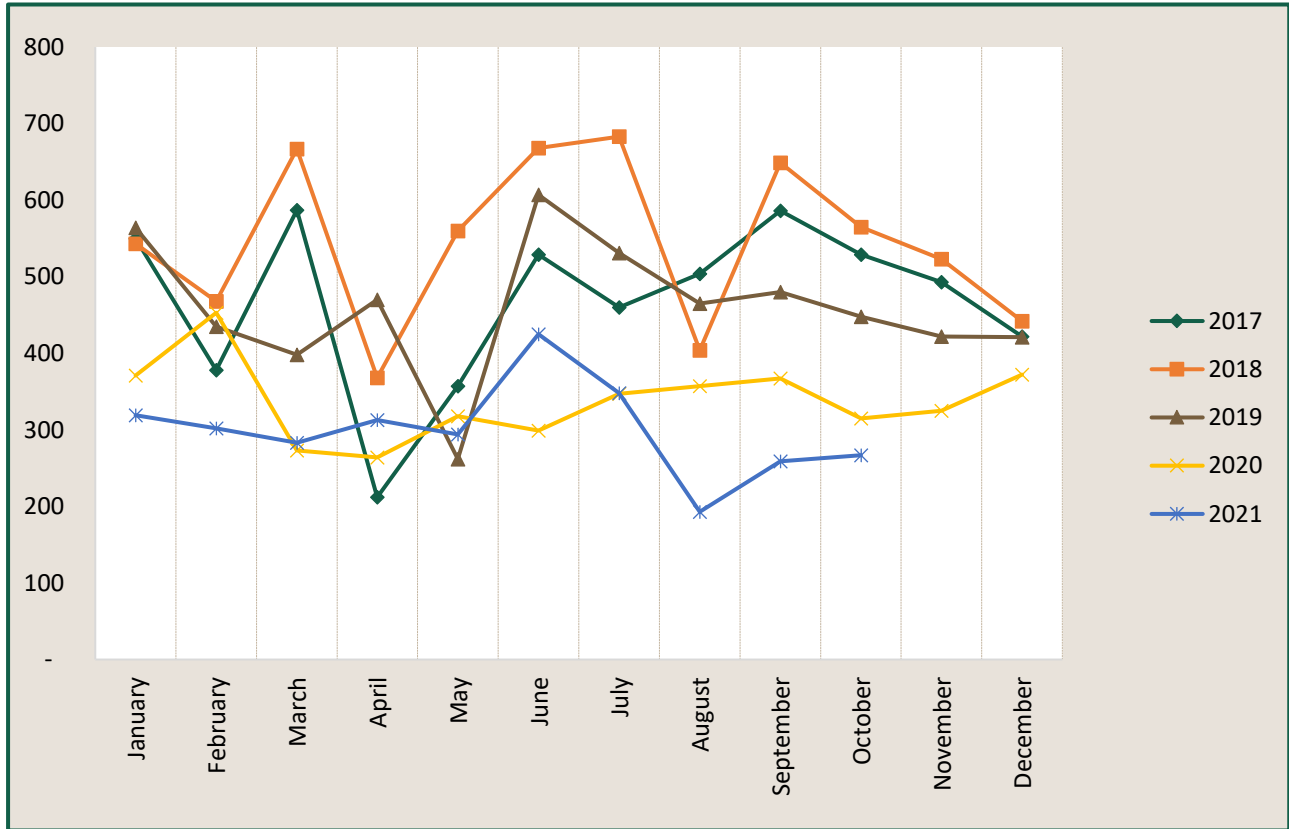
SPOKANE COUNTY SHERIFF'S OFFICE

Regional Intelligence Group 9

All Ticket Counts - Spokane Valley



Time Period: October 2021



	2017	2018	2019	2020	2021
January	550	543	564	371	319
February	378	468	435	453	302
March	587	667	398	273	283
April	212	368	470	264	313
May	357	560	262	318	294
June	529	668	607	299	425
July	460	683	531	347	348
August	504	404	465	357	193
September	586	649	480	367	259
October	529	565	448	315	267
November	493	523	422	325	
December	422	442	421	372	
Grand Total	5,607	6,540	5,503	4,061	3,003

*All ticket types except parking