

Barker Road/BNSF Railway Grade Separation Project



DESCRIPTION

This project is located near the northeast boundary of Spokane Valley. The city will construct an overpass at an at-grade crossing where a BNSF Railway mainline intersects with Barker Road. In addition, a roundabout will be built at the adjacent intersection of Barker and Trent Avenue (SR 290), significantly improving traffic flow and safety. The project is fully funded and expected to cost \$26 million. Construction on the grade separation project began in early March 2021. Completion is expected in fall 2022.

With about 100,000 population, Spokane Valley is centrally located in the largest Metropolitan Statistical Area between Seattle and Minneapolis. The BNSF line is a main transcontinental line between west coast ports and the U.S. interior. Barker and Trent are also key arterials for commercial vehicles moving freight through the area. In addition to improving safety, the project will enhance access to available industrial properties in the northeast section of the city.

BENEFITS

- Eliminates two at-grade rail crossings (Flora and Barker)
- Saves 162 minutes/per day, on average, of gate-down time
- Improves access to and reliability of the transportation network for industrial users
- Improves emergency access to properties east of Trent
- Eliminates train horns at rail crossings
- Improves Barker/Trent intersection performance from level of service 'F' to 'A'

ECONOMIC IMPACTS

The projected economic and tax impacts of the project (over a 25-year period) include:

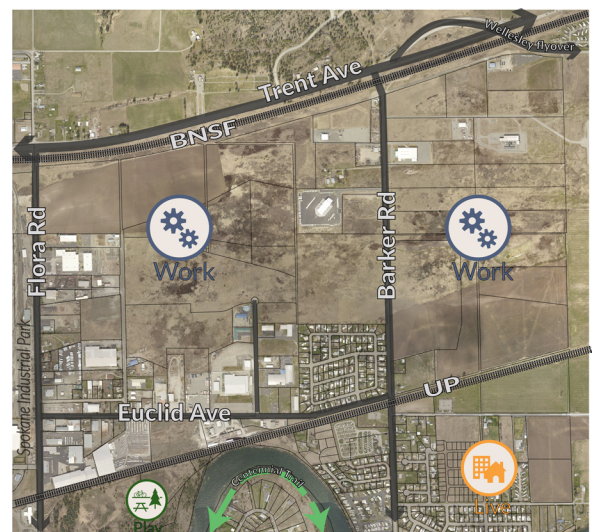
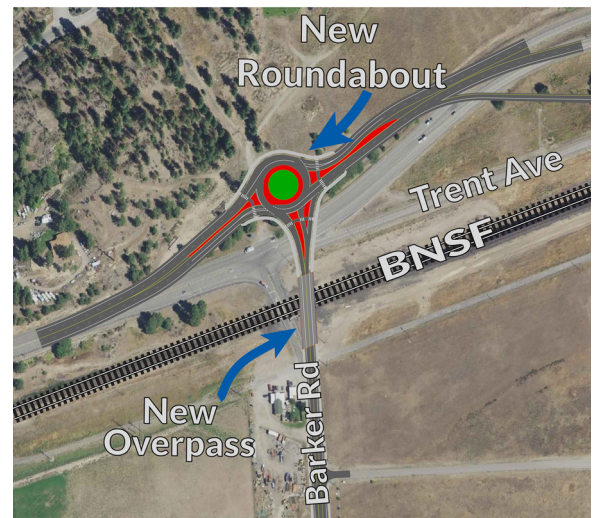
- Enhanced developability of almost 600 acres of commercial/industrial property
- \$2 billion in total economic output in the Washington State (\$980 million in direct impacts).
- 9,800 new jobs supported in the state (3,300 direct job impacts)
- \$12.3 million in new general fund taxes generated to the City of Spokane Valley
- \$50.8 million in new general fund taxes generated to Washington State



City of Spokane Valley
10210 E. Sprague Avenue
Spokane Valley, WA 99206
509-720-5000
Spokanevalley.org/BarkerBNSF

FUNDING SECURED:
\$26 MILLION

- \$9.0 million - USDOT TIGER Grant
- \$6.0 million - National Highway Freight Program
- \$1.5 million - Washington State Legislature
- \$5.0 million - WA Freight Mobility Investment Board
- \$3.6 million - City of Spokane Valley
- \$720,000 - Federal Earmark
- \$333,000 - BNSF contribution (estimated)



Commercial/industrial property in northeast Spokane Valley.