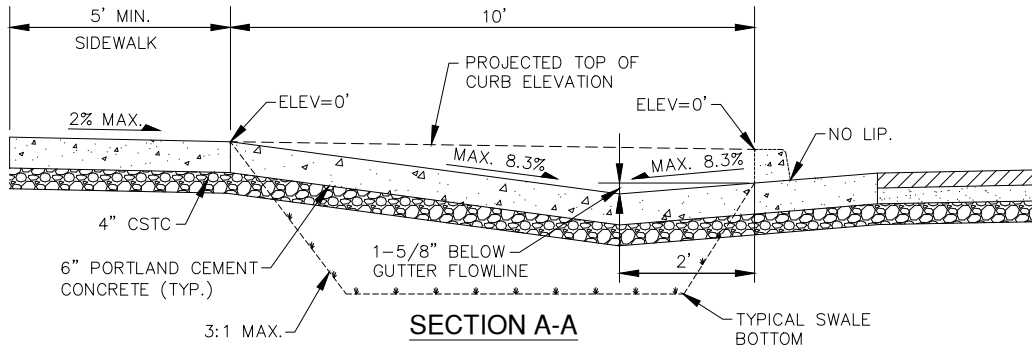
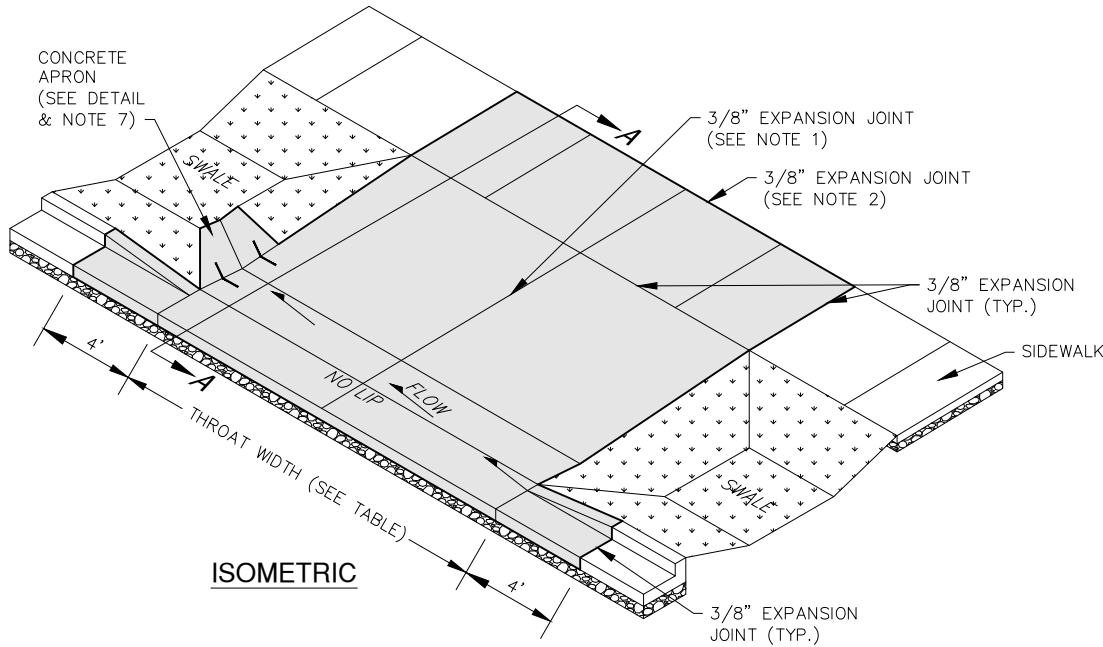


GENERAL NOTES

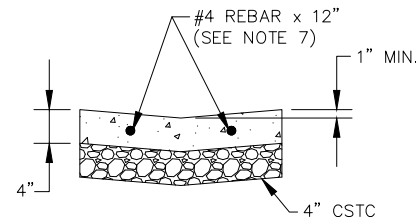
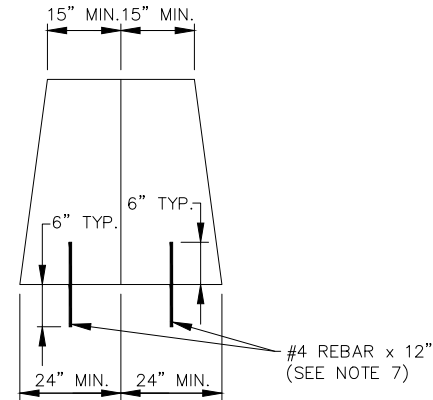
- 3/8" EXPANSION JOINT MATERIAL SHALL BE PLACED IN THE CENTER OF ALL DRIVEWAYS OVER 20' IN WIDTH.
- EXPANSION JOINT REQUIRED AT BACK OF WALK IF CONCRETE DRIVEWAY EXTENDS BEYOND BACK OF WALK.
- PORTLAND CEMENT CONCRETE SHALL BE PER WSDOT 8-06.3.
- ALL EXTERNAL EDGES TO BE TROWELLED WITH 1/4" RADIUS EDGER.
- SIDEWALK TO BE SCORED EVERY 5'. 3/8" EXPANSION JOINT TO BE INSTALLED AT LOCATIONS WHERE SIDEWALK INTERSECTS OTHER SIDEWALKS AND DRIVEWAYS.
- MIN. 4" THICK COMPACTED CSTC LAYER UNDER DRIVE APPROACH.
- APRON SHALL EXTEND TO SWALE BOTTOM AND BE SECURED TO DRIVE APPROACH WITH TWO #4 REBARS x 12" LONG, EMBEDDED 6" EACH WAY.
- SUBGRADE AND 4" CSTC UNDER APPROACH AND SIDEWALK SHALL BE COMPACTED TO 95%.
- EXISTING SIDEWALK AT NEW APPROACHES SHALL BE REMOVED AND REPLACED WITH 6" THICK CONCRETE OVER 4" CSTC COMPACTED TO 95%.
- ALL BROKEN, CRACKED, HEAVED AND SUNKEN CONCRETE SHALL BE REMOVED AND REPLACED FROM JOINT TO JOINT.
- EXCEPT FOR JOINTS, PERIMETER EDGING, AND BROOM FINISHING, NO OTHER MARKINGS ARE PERMITTED ON THE FINISHED SURFACE.



DESIGN CRITERIA

	RESIDENTIAL	COMMERCIAL
DISTANCE FROM CURB RETURN	15' MIN.	75' MIN.
THROAT WIDTH	16' MIN.*, 30' MAX.	30' MIN. 40' MAX.
SETBACK FROM SIDE PROPERTY LINE AT R.O.W.	5' MIN.	5' MIN.
SETBACK FROM SIDE PROPERTY LINE	2' MIN.	2' MIN.

*24' MIN. WIDTH IF DRIVEWAY LENGTH IS OVER 75', SEE R-117



APRON DETAIL

APPROVED BY:

William S. Helbig
WILLIAM S. HELBIG, P.E.
CITY ENGINEER

APPROVED FOR PUBLICATION 4/2021

REVISION DATE 4/2021



DRIVEWAY APPROACH
SWALE INLET

STANDARD PLAN NO.
R-112